



WE ARE HIS **WITNESSES**

- *Undertaking the Journey of Pastoral Conversion*
- *in the Archdiocese of Newark*

PARISH WORKBOOK

(Revised 09.2025)



ARCHDIOCESE
of NEWARK

**God of Mercy,
you call the Archdiocese of Newark to witness to our faith in Jesus Christ.
As we undertake the journey of pastoral conversion,
 endow us with your gifts of communion, courage and compassion.
Help us to fulfill the mission of Jesus and his Church
 through convincing outreach, vibrant parishes and effective ministries.
Raise up selfless and energetic leaders to serve the Church with fidelity and zeal.
May we, the Church of Newark in Bergen, Essex, Hudson, and Union Counties,
 be sustained and strengthened by your grace.
May we, the People of God, discern and follow the promptings of your Holy Spirit.
May we, your holy people, dedicate our lives as firm disciples of Jesus Christ –
 Son of God and Son of Mary – wherever we go.
We ask this and all our prayers through Christ our Lord.
Amen.**



An Invitation to Pastoral Conversion

When I look at the Church in northern New Jersey, I see a vibrant and diverse Catholic community...I also see an archdiocese, empowered by the Holy Spirit, that is not afraid to confront its challenges and that adapts and grows, embracing new opportunities as the world around us changes.

If you asked me today what my vision is for the Church in northern New Jersey, I would make my own Pope Francis' words from *Evangelii Gaudium* (#25):

“I hope that all communities will devote the necessary effort to advancing along the path of a pastoral and missionary conversion which cannot leave things as they presently are.”

– **Cardinal Joseph W. Tobin**

We Are His Witnesses: A Pastoral Letter to the Clergy, Religious, and Lay Faithful of the Archdiocese of Newark (2025), page 2



Why Do We Need “Pastoral Conversion?”

In North America, we have moved from a period of “**Christendom**” (*Christianity as the dominant cultural influence*) to a “**New Apostolic Age**” (*Christianity as merely one influence among others*).

What does this mean? Those who came to Church because it was the “conventional thing to do” aren’t any longer. Those with no religious conviction are keeping their distance. Those who come to Church because of ties to the past are not sustaining a discipleship needed to confront secular culture.

Responding to the “signs of the times” requires a renewed focus on evangelization and the Great Commission:

Go, therefore, and make disciples of all nations, baptizing them in the name of the Father, and of the Son, and of the Holy Spirit, teaching them to observe all that I have commanded you. (Matthew 28:19–20)





In order for the journey of the Word to continue, the Christian community must make a determined missionary decision ‘capable of transforming everything, so that the Church’s customs, ways of doing things, times and schedules, language and structures can be suitably channeled for the evangelization of today’s world rather than for her self-preservation.’

The Pastoral Conversion of the Parish Community in the Service of the Evangelizing Mission of the Church (2020) #5



What is “Pastoral Conversion?”

Pastoral Conversion is a call to parish communities to evangelize and reform.

1. Digital culture and increased mobility have interrupted the territorial assumptions that parishes are based on (#8). The current parish model no longer adequately corresponds to the many expectations of the faithful (#16).
2. Parishes must “exude that spiritual dynamic of evangelization” or “run the risk of becoming self-referential and fossilized” (#17).
3. Priests, deacons, consecrated men and women, and the laity have the obligation to “cooperate in building up the singular body of Christ” (#28). The work of the parish is the responsibility of “the whole community” and all the baptized are “protagonists of evangelization” (#39). Each member of the community should be “responsible and directly involved in caring for the needs of the Church” (#40).

Summarized points drawn from *“The Pastoral Conversion of the Parish Community in the Service of the Evangelizing Mission of the Church (2020)”*



What is “We Are His Witnesses”?

The “We Are His Witnesses” pastoral planning process seeks to support pastoral conversion in the parishes of the Archdiocese of Newark as a response to:

1. the needs and opportunities presented by the changing landscape of the Archdiocese,
2. the needs and opportunities discerned in the Synod on Synodality, Encuentro process, etc.,
3. the hopes and needs shared by clergy for a comprehensive vision and plan for the Archdiocese, and
4. the desire of Archdiocesan pastoral offices to support parishes in ongoing pastoral conversion and discipleship efforts.



Essential Questions To Guide Us

- 1. Where are we today?** What are the opportunities and challenges we face in the changing landscape of northern New Jersey? How can we more effectively embrace the concept of synodality as a way of being Church? How can we develop and sustain a bold missionary outreach here in northern New Jersey?
- 2. Where is God calling us to go?** What new opportunities is the Holy Spirit opening for us as we proclaim the joy of the Gospel in the diverse neighborhoods of Bergen, Essex, Hudson, and Union counties? How can we respond to the growing desire for life-long faith formation and spiritual renewal? How do we develop and sustain a deeper sense of co-responsibility and collaboration among leadership here in our archdiocese?
- 3. How will we get there together?** What changes do we need to make in our pastoral ministries, systems, and structures to meet the demands of pastoral conversion and missionary discipleship, both now and in the years ahead? How can we better use the regional structures to encourage collaboration among parishes and promote the concepts of subsidiarity and solidarity? How do we engage in pastoral planning that truly is grounded in our mission?



“We Are His Witnesses” Guiding Concepts

OUR PLANNING OUTCOMES

- 1. Prayer:** *We will engage all individual Catholics to prayerfully consider what it means to be “His witnesses,” how to respond to the call to conversion and discipleship, and how to better journey together.*
- 2. Plan:** *We will articulate a plan for comprehensive Catholic presence across the Archdiocese built upon synodality, subsidiarity, and solidarity; integrating evangelization and outreach, pastoral care, and long-term sustainability.*
- 3. Support:** *We will develop Archdiocesan resources, support, and accompaniment for priests, deacons, and lay leaders to assist in the local envisioning and implementation process.*

OUR ESSENTIAL QUESTIONS:

- Where are we today?
- Where is God calling us to go?
- How will we get there together?

OUR PROCESS HALLMARKS:

- Synodal discernment
- Pastoral conversion
- Missionary discipleship
- Collaboration and co-responsibility



Areas of Mission Focus

01.

Evangelization and Outreach

How will we share the Gospel with all people in our area?

- Catholic presence
- Outreach to youth, young adults, and families
- Discipleship formation
- Social outreach and engagement
- Welcome and hospitality

02.

Pastoral Care of the Faithful

How will we care for all Catholics in our parish communities?

- Vibrant liturgy
- Lifelong faith formation and Catholic education
- Well-formed pastoral ministers
- Ministry to youth, young adults, and families

03.

Long-Term Sustainability

How will we provide support for parishes into the future?

- Invested and engaged lay leaders
- Resources to support and sustain evangelization and pastoral care
- Resources to maintain physical structures and Catholic presence
- Supportive context for evangelization and growth



“We Are His Witnesses” Planning Timeline

PRAYER, DISCERNMENT, and PLANNING



ENVISIONING and IMPLEMENTATION



“We Are His Witnesses” Participants



- As Archbishop, Cardinal Tobin makes any and all decisions.
- His leadership is supported by the groups in orange.
- Groups in blue provide ongoing input and feedback.
- Groups in yellow support the various phases and tasks of the process.



About this Workbook

The workbook should be used as an *internal* resource to help pastors and other parish leaders reflect on the current strengths and opportunities for future growth of ministry and evangelization in each planning area. Workbook data was submitted by each parish to the Archdiocese. The was reviewed and corrected by parish leaders in the summer of 2025.

CONFIDENTIALITY STATEMENT:

The information being provided to you is shared in the context of your participation in the pastoral conversion plan of *We Are His Witnesses*. **It is intended solely for that purpose and is considered confidential.**

This material may not be shared—whether in hard copy, digital form, verbally or by any other means —with any other individual or entity without the express written permission of the Archdiocese.



Glossary of Terms

Archbishop An archbishop oversees the ministerial and administrative life of the archdiocese, which is made up of local communities (parishes) of the faithful.

Archdiocese The parishes that an archbishop shepherds. The Archdiocese of Newark comprises 212 parishes in four counties in northern New Jersey, Bergen, Essex, Hudson and Union, and serves approximately 1.3 million Catholics.

Areas of Mission Focus The three prioritized targets for pastoral planning discussions and decisions: 1. Evangelization and Outreach, 2. Pastoral Care of the Faithful, and 3. Long-Term Sustainability

Canon Law Canon law refers to the body of law that governs the internal life and operations of the church.

Church A worship site or sacred site dedicated for divine worship for the benefit of the faithful; “church” refers to a building, whereas “parish” refers to a community.

Deanery A grouping of parishes within the archdiocese organized by geography and led by a dean (usually a pastor appointed by the archbishop). Deaneries aim to promote pastoral care through collaborative efforts, providing support and resources to parishes within their boundaries. The Archdiocese of Newark includes 27 deaneries.

Disciple Maker Index (DMI) A survey tool used to assess parish strengths, opportunities, and areas of growth; it is used to help parishes identify strategies during the implementation phase.

Evangelization The proclamation of the Gospel message to invite others to the faith.

Key Parish Leader (KPL) Collaborating with the pastor, PPOC, and councils of the parish, KPLs serve as the primary ambassadors of the We Are His Witnesses planning initiative to their fellow parishioners as well as the primary ambassadors of the parish to the Archdiocesan Planning Commission; this is accomplished by providing discussion, feedback, and input during planning consultations.

Merged Two or more parishes that have been united in such a way that a new parish is established from them. The new, merged parish has one pastoral council, one finance council, one pastoral vision, one staff, and one set of finances.

Missionary Discipleship A continuous process of growing in faith, deepening one’s relationship with God, and striving to live according to the teachings of Jesus Christ that results in both personal transformation and outreach to actively share the Gospel with others.

Models One or more viable options for future parish relationships or structures that help meet the Areas of Mission Focus; used to generate discussion, feedback, and input from priests, parish leaders, and parishioners.

Parish A community of the faithful within the archdiocese whose pastoral care has been entrusted to a pastor; a community of people who worship together in a particular place (territory).

Parish Point of Contact (PPOC) Collaborating with the pastor, the PPOC serves as the main conduit of information and coordination of logistics for the We Are His Witnesses planning initiative to their parish community.



Glossary of Terms (cont.)

Parish Workbook A collection of information about the parish, including demographics, sacramental trends, finances, ministries, community profile, history, and more; used to assist discussions and discernment related to pastoral conversion.

Parochial Vicar Formally called an associate pastor. A priest who serves as a co-worker with the pastor and ministers to parishioners under the authority of the pastor.

Pastor A priest entrusted with the pastoral care and leadership under the authority of the archbishop; responsible for administering the sacraments, instructing the congregation in the doctrine of the Church, and providing other ministerial services to the people of the parish.

Pastoral Care Refers to the caring work of the Church; the comprehensive support offered to individuals, especially those in need; it includes spiritual and religious needs, accompaniment, sacramental support, and support that addresses specific needs, such as those of youth, married couples, migrants, the sick, etc.

Pastoral Conversion The call to parishes to renew and transform structures and practices for the evangelization of today's world

Pastoral Planning A process of discernment to understand the local church's mission, respond to changing times, and foster a vibrant faith community.

Pastorate One or more parishes entrusted to the pastoral care of a pastor

Planning Area A geographic region within the Archdiocese; established only to help present and discuss possible parish models.

Relegation A church building that will no longer be used for worship and will transfer ownership or be sold by a parish. The process is governed by canon law and requires a decree from the archbishop.

Solidarity The affirmation that all people are God's children, connected as sisters and brothers; it emphasizes our interdependence, where we need each other to live in peace and harmony. It is key to living God's love by helping others and creating a united, compassionate world.

Subsidiarity The principle that decisions should be made at the most local level possible, ensuring everyone has a voice and can contribute; it empowers individuals and communities to participate in decisions that affect them.

Synodality The act of engaging in authentic dialogue within and beyond the Church, fostering a united, inclusive, and missionary community.





ARCHDIOCESE
of NEWARK



Territory for Evangelization

- The Archdiocese of Newark encompasses the territory of four counties in northern New Jersey: Bergen, Essex, Hudson, and Union.
- The general population of this region is approximately 3.1 million people.
- There are currently 212 canonical parishes within the boundaries of the Archdiocese.
- The Catholic population of this region is approximately 1.37 million people.
- The Catholic population comprises approximately 44% of the general population.



Our Current Reality

1. The general population of the four counties in the Archdiocese is projected to grow, along with opportunities for evangelization. [**see page #18**]
2. While Mass attendance and the number of individuals receiving Sacraments are rebounding since the COVID-19 pandemic, the overall trend is still down (below 2019 levels). [**see pages #19-20**]
3. Parishes are decreasing in size, based on participation and Mass attendance. [**see page #21**]
4. Given current age distribution and ordination trends, the number of priests available to serve as parish pastors will decrease significantly over the next 20 years. [**see pages #22-23**]



General Population Trend and Forecast



- The total population and number of households within the territory of the Archdiocese is expected to grow by 3% or more.
- This growth is expected in each of the four counties.
- This is increase in general population, meaning an increase in both the Catholic and non-Catholic population.

Mass Attendance by County



	Since 2019	Since 2013	Since 1998
Bergen	-15%	-24%	-45%
Essex	-17%	-28%	-42%
Hudson	-26%	-27%	-47%
Union	-15%	-19%	-40%
RCAN*	-18%	-24%	-44%

* NOTE: "RCAN" stands for the "Roman Catholic Archdiocese of Newark"

Data is self-reported annually by each parish.

Sacramental Trends



	Since 2019	Since 2013	Since 2008
Baptisms	-12%	-24%	-35%
First Communion	-14%	-18%	-32%
Confirmations	-14%	-13%	-26%
Marriages	-22%	-25%	-50%
Funerals	-20%	-24%	-36%

Data is self-reported annually by each parish.



Number of Parishes By Mass Attendance

of Parishes



- Average Mass attendance per parish was 936 in 2013. It fell to 707 in 2024, a 24% decrease.
- 4 parish had an average attendance of under 200 people in 2013. This rose to 12 parishes in 2024.
- 12 parishes had more than 2,000 attendees per weekend in 2013. This fell to only 7 parishes in 2024.

Active RCAN Priests by Age Group



- There were 381 priests of the Archdiocese of Newark in active ministry in 2024.
- In 20 years, the priests currently aged 50 and over will be retired from active ministry.
- 254 of all active priests were over the age of 50 (66% of the total).
- 127 of all active priests were under the age of 50 (34% of the total).

Projected Number of RCAN Priests



- The projection models the number of priests given an average of 1 to 4 ordinations per year.
- The projection assumes a usual retirement age of 70 with some priests remaining until 75.
- The number of priests available to serve as pastor in 2024 was 205. This is expected to decrease to between 104 and 131 by 2044, depending on the number of ordinations.



OUR PLANNING AREA

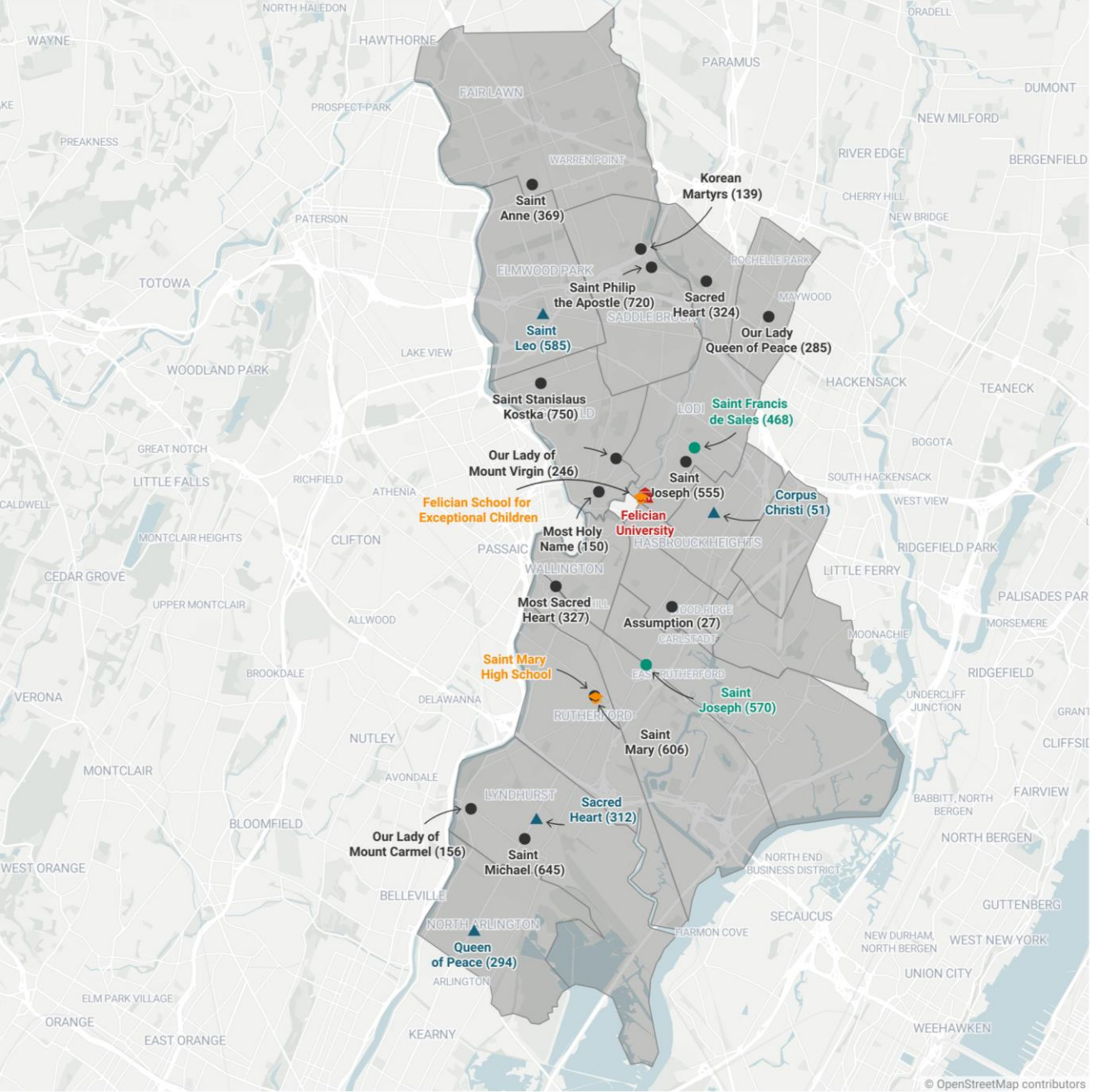
Southwest Bergen County



Southwest Bergen

About our planning area:

- The planning area is the southwestern area of Bergen county shown in the map on the prior page.
- The planning area includes 20 parishes, 4 elementary schools and 1 high school.
- There are currently 32 priests assigned to the planning area.
- Parishes are generally within 3 miles of a nearby parish.



● Parish ● Parish with a cemetery ▲ Parish with a Catholic School 🎓 Catholic High School

🏠 Catholic Campus Ministry



Planning Area Population Trends

Area Name	2000	2010	2020	Estimated	Change in %		
	Census	Census	Census	2023	23 vs 20	23 vs 10	23 vs 00
Carlstadt borough	5,917	6,127	6,372	6,333	-0.6%	3.4%	7.0%
East Rutherford borough	8,716	8,913	10,022	10,421	4.0%	16.9%	19.6%
Elmwood Park borough	18,925	19,403	21,422	21,256	-0.8%	9.6%	12.3%
Fair Lawn borough	31,637	32,457	34,927	35,564	1.8%	9.6%	12.4%
Garfield city	29,786	30,487	32,655	32,456	-0.6%	6.5%	9.0%
Hasbrouck Heights borough	11,662	11,842	12,125	12,030	-0.8%	1.6%	3.2%
Lodi borough	23,971	24,136	26,206	25,832	-1.4%	7.0%	7.8%
Lyndhurst township	19,383	20,554	22,519	22,276	-1.1%	8.4%	14.9%
Maywood borough	9,523	9,555	10,080	10,023	-0.6%	4.9%	5.3%
Moonachie borough	2,754	2,708	3,133	3,108	-0.8%	14.8%	12.9%
North Arlington borough	15,181	15,392	16,457	16,370	-0.5%	6.4%	7.8%
Rochelle Park township	5,528	5,530	5,814	5,833	0.3%	5.5%	5.5%
Rutherford borough	18,110	18,061	18,834	18,852	0.1%	4.4%	4.1%
Saddle Brook township	13,155	13,659	14,294	14,386	0.6%	5.3%	9.4%
Teterboro borough	18	67	61	71	16.4%	6.0%	294.4%
Wallington borough	11,583	11,335	11,868	11,825	-0.4%	4.3%	2.1%
Wood-Ridge borough	7,644	7,626	10,137	10,197	0.6%	33.7%	33.4%
Total Planning Area	233,493	237,852	256,926	256,833	0.0%	8.0%	10.0%

- The planning area has grown 10% since 2000, with the bulk of that growth coming from 2010 to 2020. The area has been stable overall since 2020.
- Largest communities are Fair Lawn, Garfield and Lodi.
- All communities have grown. The fastest growing communities are in the southern part of the planning area (East Rutherford, Woodridge, Lyndhurst, etc.).

Source: United States Census



Planning Area Demographics

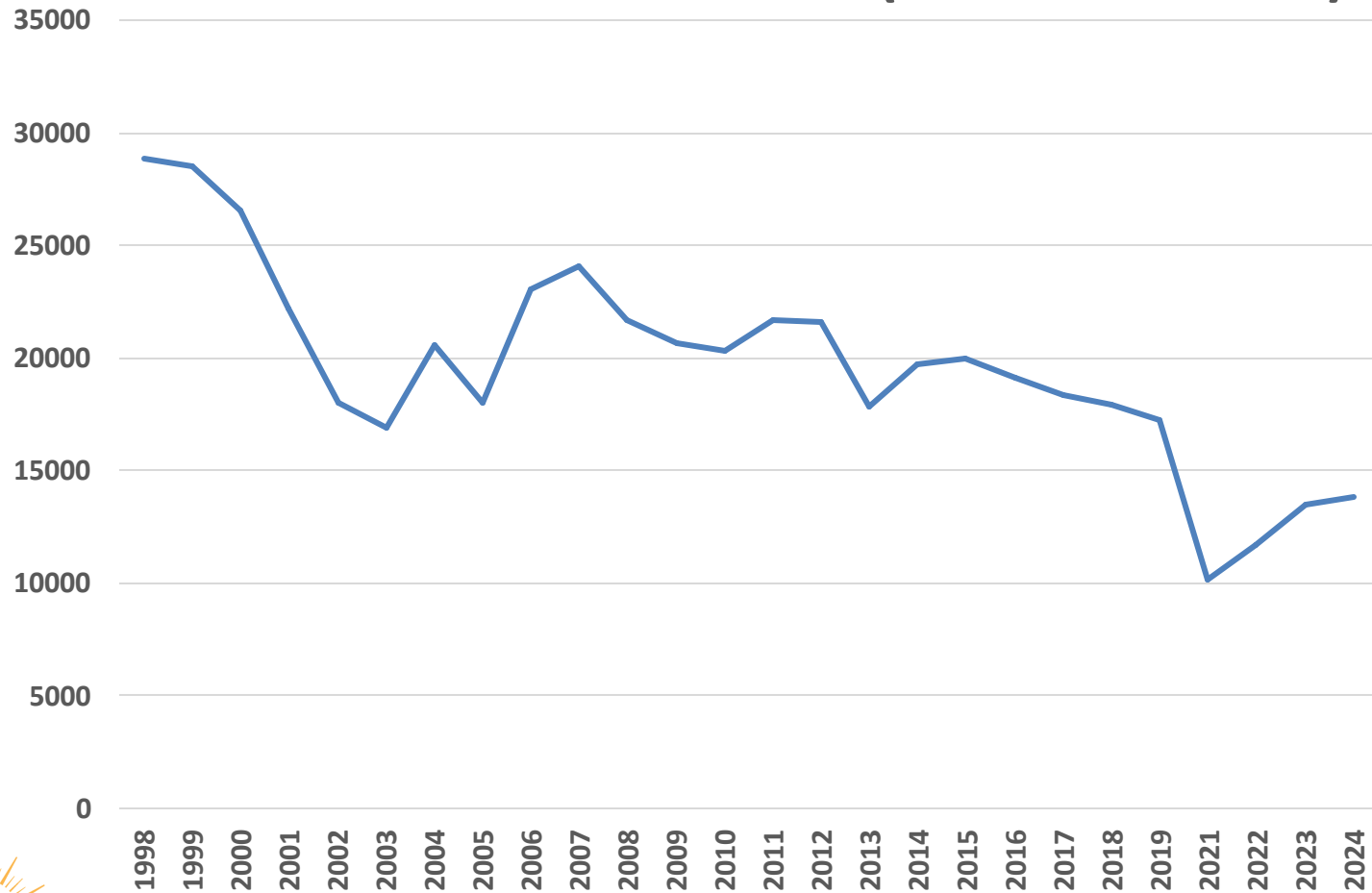
Planining Area Demographics	Population	Ethnic Composition					(\$ 000) Median HH Inc
		White	Hispanic	Black	Asian	Other	
Carlstadt borough	6,333	65.7%	20.9%	0.0%	8.9%	4.5%	89.5
East Rutherford borough	10,421	46.6%	26.8%	4.0%	20.8%	1.8%	86.6
Elmwood Park borough	21,256	47.0%	31.3%	9.5%	9.7%	2.5%	95.1
Fair Lawn borough	35,564	63.8%	13.9%	4.2%	13.6%	4.5%	139.6
Garfield city	32,456	42.7%	47.9%	5.2%	4.0%	0.2%	71.4
Hasbrouck Heights borough	12,030	51.4%	29.0%	3.4%	11.9%	4.3%	112.0
Lodi borough	25,832	37.9%	42.6%	8.2%	8.2%	3.1%	79.8
Lyndhurst township	22,276	83.4%	9.0%	0.5%	5.4%	1.7%	95.5
Maywood borough	10,023	47.0%	27.6%	5.3%	17.8%	2.3%	112.6
Moonachie borough	3,108	27.5%	58.0%	0.0%	14.0%	0.5%	102.2
North Arlington borough	16,370	51.7%	33.3%	1.4%	9.0%	4.6%	95.7
Rochelle Park township	5,833	84.1%	8.6%	0.5%	5.9%	0.9%	108.8
Rutherford borough	18,852	55.3%	22.8%	3.0%	14.6%	4.3%	128.4
Saddle Brook township	14,386	86.7%	6.3%	1.2%	4.6%	1.2%	113.6
Teterboro borough	71	n/a	n/a	n/a	n/a	n/a	n/a
Wallington borough	11,825	67.0%	20.8%	3.9%	3.7%	4.6%	77.8
Wood-Ridge borough	10,197	51.3%	19.6%	4.6%	22.0%	2.5%	123.9

- Median Household income is generally in line with the New Jersey state average of \$100,000. Eight municipalities are above the average and eight are below.
- Ethnically the largest groups are Whites and Hispanics. Seven communities have an Asian presence greater than 10%.

Source: United States Census

Planning Area Mass Attendance Trend

Mass Attendance (October count)



- Mass Attendance has declined 52% since 1998 vs the Archdiocese average of 43% decline.
- Between 1998 and 2019 attendance declined 41%.
- From 2019 (Pre-COVID) to 2024 attendance declined an additional 18%.

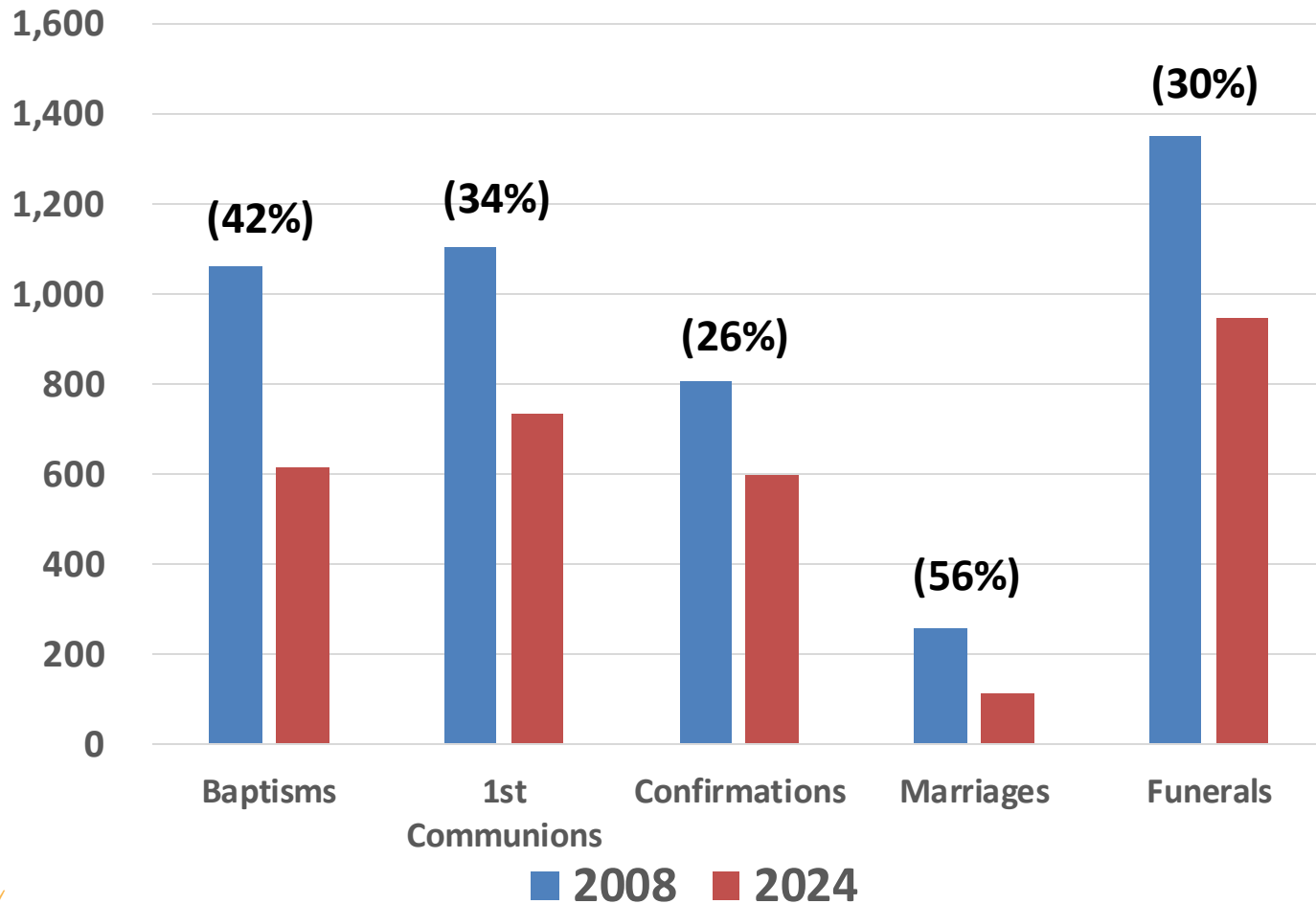
NOTE: No Mass attendance count was taken in 2020.

Planning Area Mass Attendance Trend

PARISH NAME	TOWN	1998	2009	2019	2022	2023	2024	2019 vs 1998	2024 vs 2019	2024 vs 1998	# of Masses	Seating Capacity	% Capacity Utilized
St. Joseph	E. Rutherford	1,587	1,136	719	534	697	763	-55%	6%	-52%	5	275	55%
St. Leo	Elmwood Park	1,263	1,057	857	611	611	781	-32%	-9%	-38%	4	350	56%
St. Anne	Fair Lawn	2,139	1,891	1,301	940	1,077	1,204	-39%	-7%	-44%	5	1,400	17%
Most Holy Name Church	Garfield	547	1,024	958	n/a	850	953	75%	-1%	74%	4	420	57%
Our Lady of Mt. Virgin	Garfield	1,152	803	471	520	507	363	-59%	-23%	-68%	4	350	26%
St. Stanislaus Kostka	Garfield	2,907	n/a	1,398	978	984	948	-52%	-32%	-67%	7	400	34%
Corpus Christi	Hasbrouck Hgts.	2,064	1,217	885	571	666	642	-57%	-27%	-69%	4	350	46%
St. Francis DeSales	Lodi	832	488	701	591	682	641	-16%	-9%	-23%	8	170	47%
St. Joseph	Lodi	1,664	982	680	532	611	650	-59%	-4%	-61%	5	425	31%
Our Lady of Mt. Carmel	Lyndhurst	897	780	519	375	457	443	-42%	-15%	-51%	4	270	41%
Sacred Heart	Lyndhurst	1,315	735	595	547	509	494	-55%	-17%	-62%	6	350	24%
St. Michael	Lyndhurst	995	775	629	365	368	395	-37%	-37%	-60%	4	480	21%
Queen of Peace	North Arlington	2,331	2,053	1,159	865	924	1,043	-50%	-10%	-55%	5	1,500	14%
Sacred Heart	Rochelle Park	930	861	829	697	915	949	-11%	14%	2%	4	350	68%
St. Mary	Rutherford	2,078	1,521	1,305	825	820	925	-37%	-29%	-55%	4	400	58%
Church of the Korean Martyrs	Saddle Brook	618	970	652	453	419	435	6%	-33%	-30%	4	500	22%
St. Philip the Apostle	Saddle Brook	1,515	1,051	763	421	462	458	-50%	-40%	-70%	5	500	18%
Most Sacred Heart	Wallington	1,826	1,581	1,393	923	898	859	-24%	-38%	-53%	8	300	36%
Assumption	Wood-ridge	1,188	788	599	505	495	550	-50%	n/a	n/a	4	500	28%
Total Planning Area		27,848	19,713	16,413	11,253	12,952	13,496	-41%	-18%	-52%	94		

- All parishes in the planning area except two have experienced a significant attendance decline.
- Percent of church capacity utilized given 2024 attendance and the number of Masses celebrated varies, but is less than 40%, with eight exception.

Planning Area Mass Sacramental Trends



- Sacramental trends are declining in line with Archdiocesan averages.
- Funerals exceed baptisms by a 1.55 to 1 ratio, near the Archdiocesan average of 1.5 Baptisms to 1 Funeral.
- There are 3,536 children in religious education in the planning area in the 2023-24 school year.
- Total registered parishioners are 70,439 and there are 28,647 registered families in 2024.

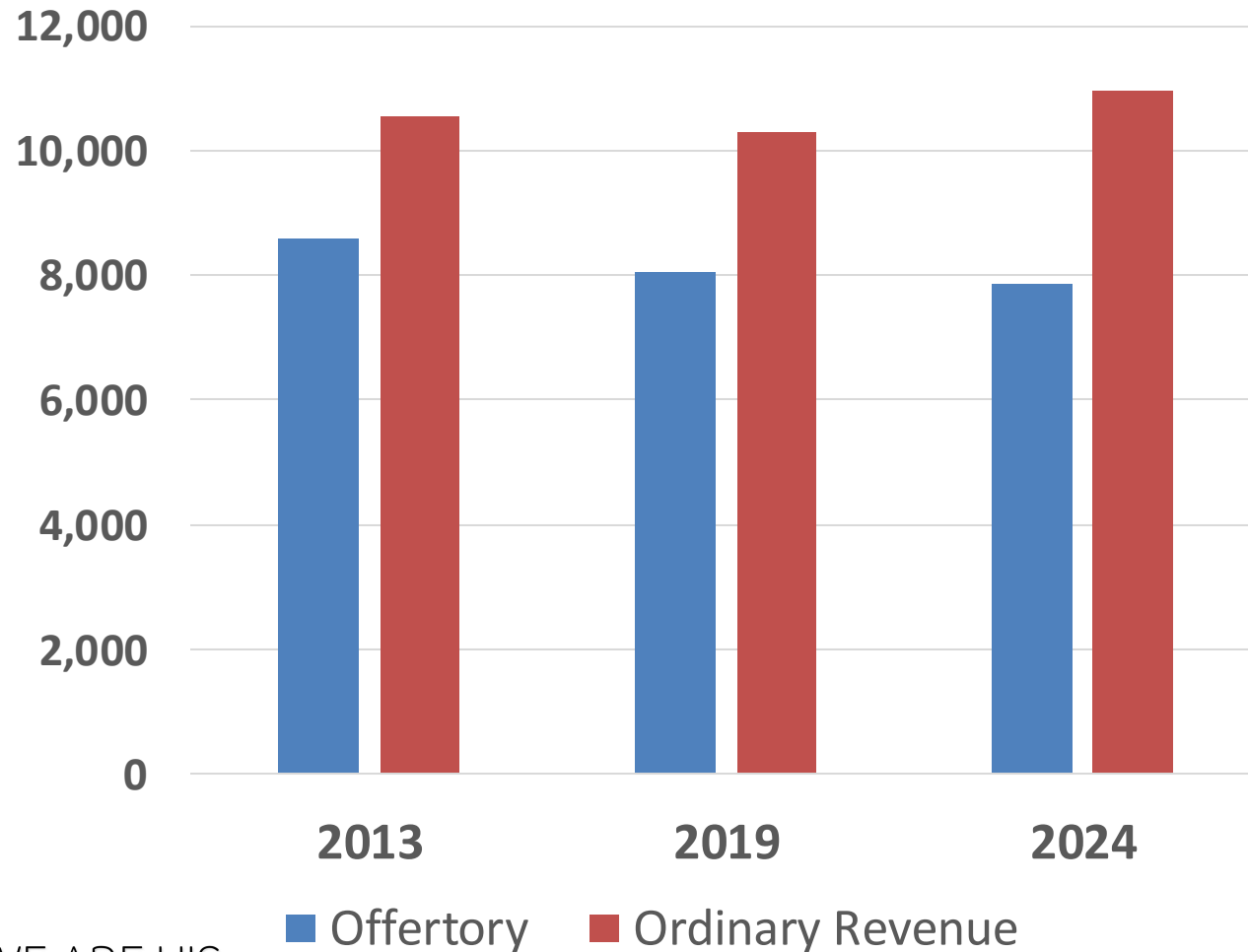
Planning Area Mass Sacramental Trends

PARISH NAME	TOWN	BAPTISMS					FIRST COMMUNIONS					CONFIRMATIONS				
		2008	2013	2019	2023	2024	2008	2013	2019	2023	2024	2008	2013	2019	2023	2024
St. Joseph	E. Rutherford	78	33	43	33	25	97	27	33	27	35	71	12	21	12	17
St. Leo	Elmwood Park	43	26	33	51	55	59	51	43	68	35	50	52	38	35	65
St. Anne	Fair Lawn	109	80	98	80	69	122	56	105	56	75	101	61	74	61	65
Most Holy Name Church	Garfield	88	59	65	59	-	88	46	64	46	-	-	19	35	19	-
Our Lady of Mt. Virgin	Garfield	61	44	31	44	29	29	23	30	23	20	14	13	19	13	17
St. Stanislaus Kostka	Garfield	-	13	21	13	13	-	38	35	38	26	-	28	33	28	22
Corpus Christi	Hasbrouck Hgts.	57	64	40	39	39	107	111	79	82	69	73	114	80	63	74
St. Francis DeSales	Lodi	46	23	40	23	17	19	30	13	30	45	21	23	11	23	23
St. Joseph	Lodi	57	28	50	28	29	39	21	44	21	18	-	15	22	15	21
Our Lady of Mt. Carmel	Lyndhurst	46	16	25	16	15	29	17	21	17	19	41	14	23	14	8
Sacred Heart	Lyndhurst	49	39	37	34	42	74	73	47	60	61	60	45	46	45	48
St. Michael	Lyndhurst	34	17	34	17	11	17	12	18	12	10	17	14	17	14	9
Queen of Peace	North Arlington	129	113	96	113	81	85	83	79	83	91	81	57	51	57	62
Sacred Heart	Rochelle Park	56	35	30	35	48	31	36	37	36	27	30	25	35	25	21
St. Mary	Rutherford	65	50	74	50	41	79	55	70	55	55	87	49	77	49	45
Church of the Korean Martyrs	Saddle Brook	27	17	18	17	6	31	12	11	12	18	21	7	3	7	8
St. Philip the Apostle	Saddle Brook	54	52	24	25	25	69	43	34	43	48	60	64	40	39	36
Most Sacred Heart	Wallington	35	14	41	14	26	68	32	50	32	26	4	28	55	28	25
Assumption	Wood-ridge	27	34	36	42	45	61	38	38	29	54	77	45	39	28	31
Total Planning Area		1,061	757	836	733	616	1,104	804	851	770	732	808	685	719	575	597

Planning Area Mass Sacramental Trends

PARISH NAME	TOWN	MARRIAGES					FUNERALS					RELIGIOUS EDUCATION				
		2008	2013	2019	2023	2024	2008	2013	2019	2023	2024	2019-2020	2020-2021	2021-2022	2022-2023	2023-2024
St. Joseph	E. Rutherford	22	8	12	8	12	65	26	54	31	24	-	97	-	134	120
St. Leo	Elmwood Park	12	10	5	2	4	94	67	61	41	61	-	84	-	157	145
St. Anne	Fair Lawn	29	13	14	13	13	126	130	95	130	101	-	470	-	442	450
Most Holy Name Church	Garfield	12	11	4	11	-	48	-	51	-	-	-	50	101	130	155
Our Lady of Mt. Virgin	Garfield	14	7	9	7	17	101	88	95	88	69	129	90	83	106	92
St. Stanislaus Kostka	Garfield	-	4	11	4	3	-	41	33	41	36	148	106	106	83	75
Corpus Christi	Hasbrouck Hgts.	14	19	9	9	5	98	74	105	82	80	-	339	344	321	314
St. Francis DeSales	Lodi	5	5	2	5	4	64	15	42	15	32	-	-	109	150	175
St. Joseph	Lodi	12	1	8	1	2	91	67	63	67	57	-	140	-	123	110
Our Lady of Mt. Carmel	Lyndhurst	9	-	2	-	2	47	59	38	59	43	134	114	104	-	90
Sacred Heart	Lyndhurst	14	13	7	8	6	81	114	104	52	48	143	-	109	130	141
St. Michael	Lyndhurst	15	8	2	3	5	51	28	50	28	31	-	-	-	-	55
Queen of Peace	North Arlington	37	16	17	16	9	147	114	144	114	113	301	246	274	270	311
Sacred Heart	Rochelle Park	11	7	8	7	7	39	25	50	25	24	190	159	163	173	175
St. Mary	Rutherford	14	1	14	1	7	92	93	77	93	87	-	475	-	353	371
Church of the Korean Martyrs	Saddle Brook	9	1	1	1	1	5	6	7	6	7	-	279	67	82	111
St. Philip the Apostle	Saddle Brook	5	4	6	4	7	65	81	65	44	49	-	195	188	185	200
Most Sacred Heart	Wallington	16	7	9	7	4	82	40	62	40	47	282	257	213	200	190
Assumption	Wood-ridge	8	8	3	11	6	56	52	47	46	40	210	271	247	240	256
Total Planning Area		258	143	143	118	114	1,352	1,120	1,243	1,002	949	1,537	3,372	2,108	3,279	3,536

Planning Area Ordinary Revenue



- Offertory has declined 8% over the past 10 years, but total Ordinary Revenue has increased by 4%. The increase in other ordinary income is in 2 parishes and not broad based. Excluding those two parishes Ordinary revenue follows the trend of offertory.
- Three parishes have seen offertory increases over 10% in the past 10 years.
- Five parishes have seen offertory decreases greater than 20% over the past 10 years.

Planning Area Elementary Schools

Parish	St. Leo Parish		
School	SAINT LEO SCHOOL		
Town	ELMWOOD PK		
Enrollment Capacity	420		
	Pre-K	K-8	8
Oct. 2015	38	193	231
Oct. 2020	36	218	254
Oct. 2021	53	211	264
Oct. 2022	35	193	228
Oct. 2023	32	202	234
Oct. 2024	27	181	208

Parish	Corpus Christi Parish		
School	CORPUS CHRISTI SCHOOL		
Town	HASBROUCK HEIGHTS		
Enrollment Capacity	480		
	Pre-K	K-8	8
Oct. 2015	99	325	424
Oct. 2020	47	281	328
Oct. 2021	87	293	380
Oct. 2022	115	272	387
Oct. 2023	116	289	405
Oct. 2024	116	296	412

Parish	Sacred Heart Parish		
School	SACRED HEART SCHOOL		
Town	LYNDHURST		
Enrollment Capacity	728		
	Pre-K	K-8	8
Oct. 2015	84	334	418
Oct. 2020	44	288	332
Oct. 2021	81	317	398
Oct. 2022	73	292	365
Oct. 2023	78	325	403
Oct. 2024	72	331	403

Parish	Queen of Peace Parish		
School	QUEEN OF PEACE SCHOOL		
Town	NORTH ARLINGTON		
Enrollment Capacity	588		
	Pre-K	K-8	8
Oct. 2015	43	245	288
Oct. 2020	26	138	164
Oct. 2021	42	146	188
Oct. 2022	42	146	188
Oct. 2023	34	131	165
Oct. 2024	49	133	182



WE ARE HIS
WITNESSES

Church of the Sacred Heart,
Lyndhurst, NJ

About Our Parish



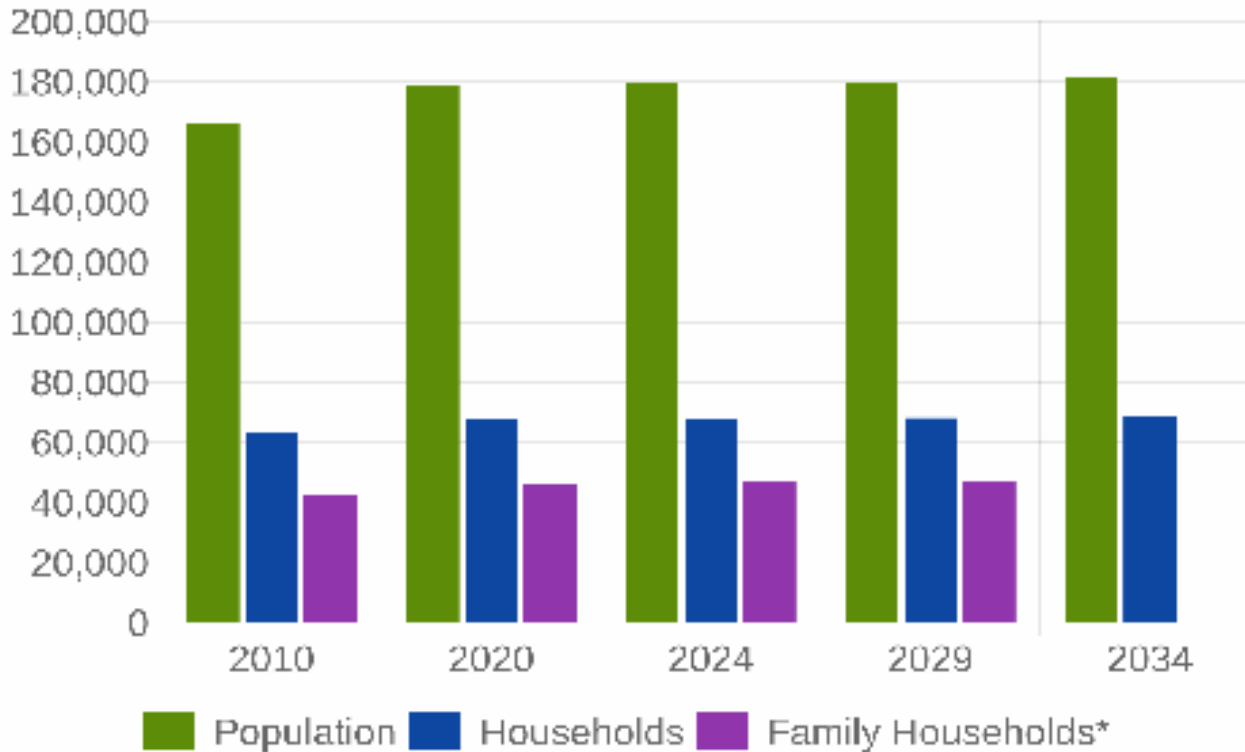
- The parish was established in 1956 and is located in Lyndhurst, NJ.
- There are over 2240 registered families.
- The church has a seating capacity of 350. With 2024 Mass attendance of 494 and 6 Masses on a weekend, average Mass attendance as a percentage of capacity is 23%.

Parish Demographics

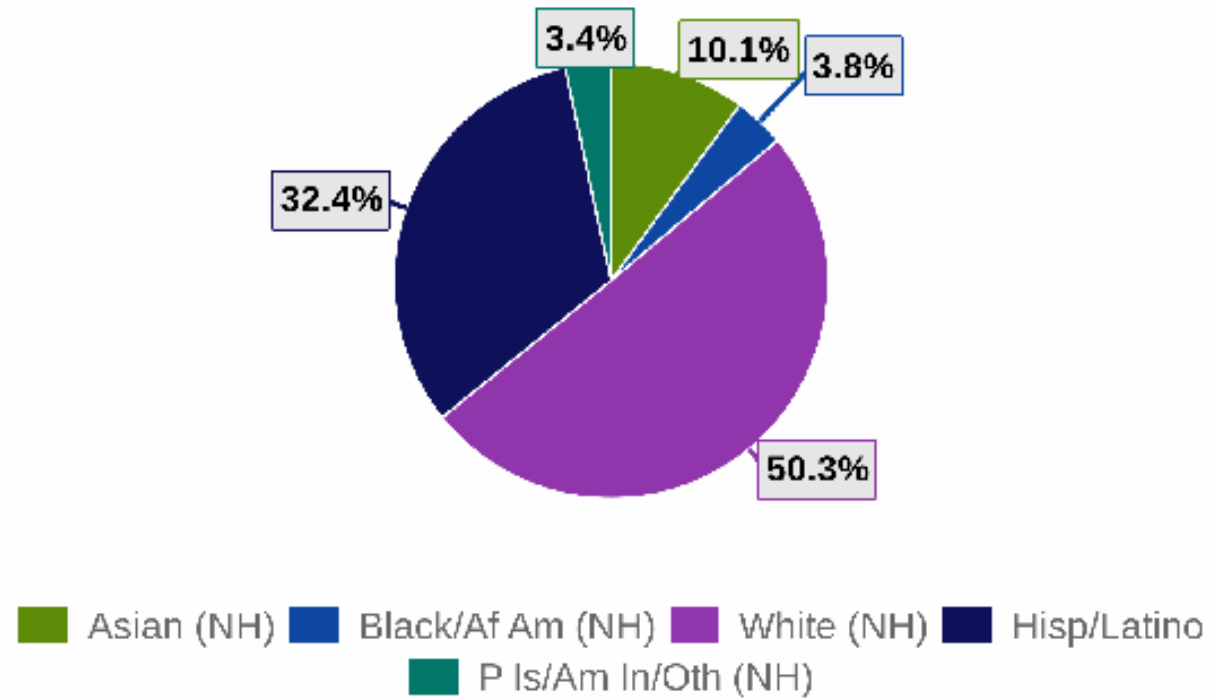
Data based on 3-mile radius from Church building



The general population of the area has increased 12,960 (7.79%) since 2010. It is projected to increase 1,839 (1.03%) over the next 10 years.



Ethnically, the area's largest population is White (NH) (50.3%), followed by Hisp/Latino (32.4%), and Asian (NH) (10.1%).

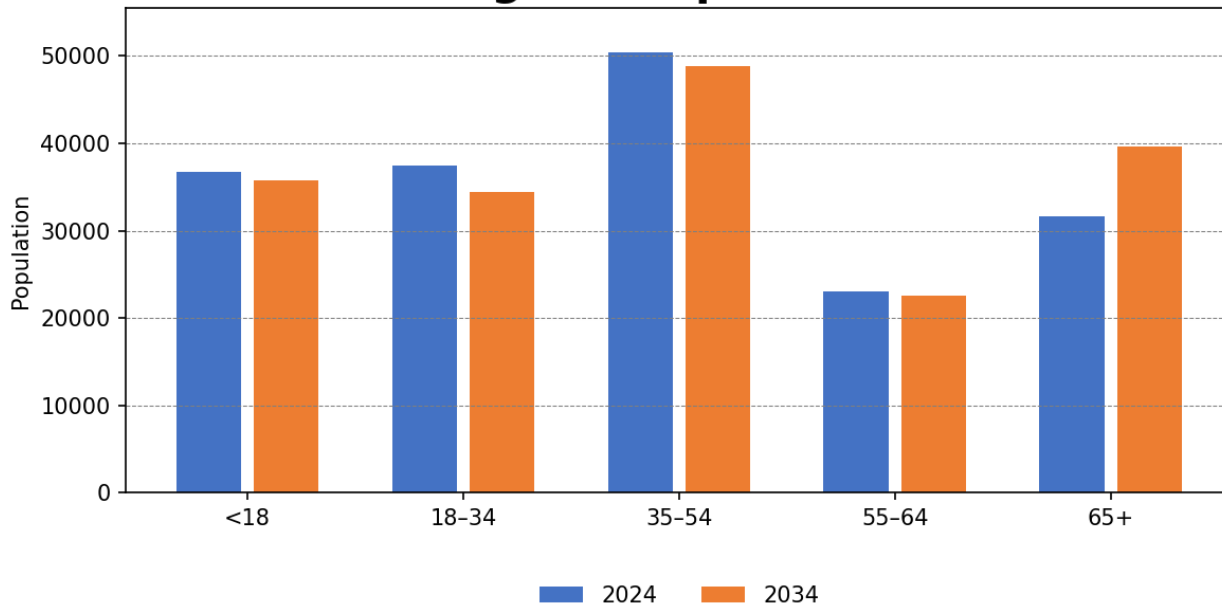


Parish Demographics

Data based on 3-mile radius from Church building



Age of Population

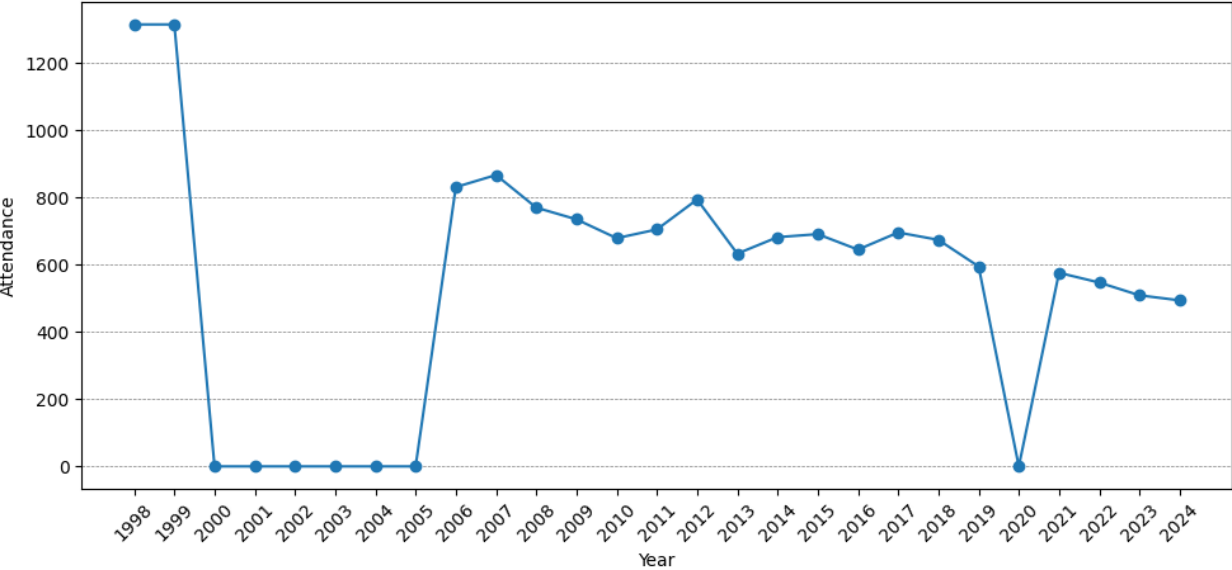


- The area’s population is projected to slightly age, with a 4.23% increase in the 65+ age group from 2024 to 2034. Simultaneously, there is a projected 0.12% increase in the school-aged population (ages 5–17), indicating a rise in the number of children.
- The % of two-parent (married couple) households is projected to slightly decrease by 1.07%, from 74.0% in 2024 to 72.9% in 2029.
- The estimated current-year average household income is \$131,153. The average household income is projected to grow by 11.23% to \$145,885.
- In 2024, 40.8% of the population in the study area hold a bachelor’s or graduate degree, compared to 42.3% statewide. This suggests a comparably educated population, which may influence community engagement, expectations, and economic behavior.

Parish Sacramental Trends



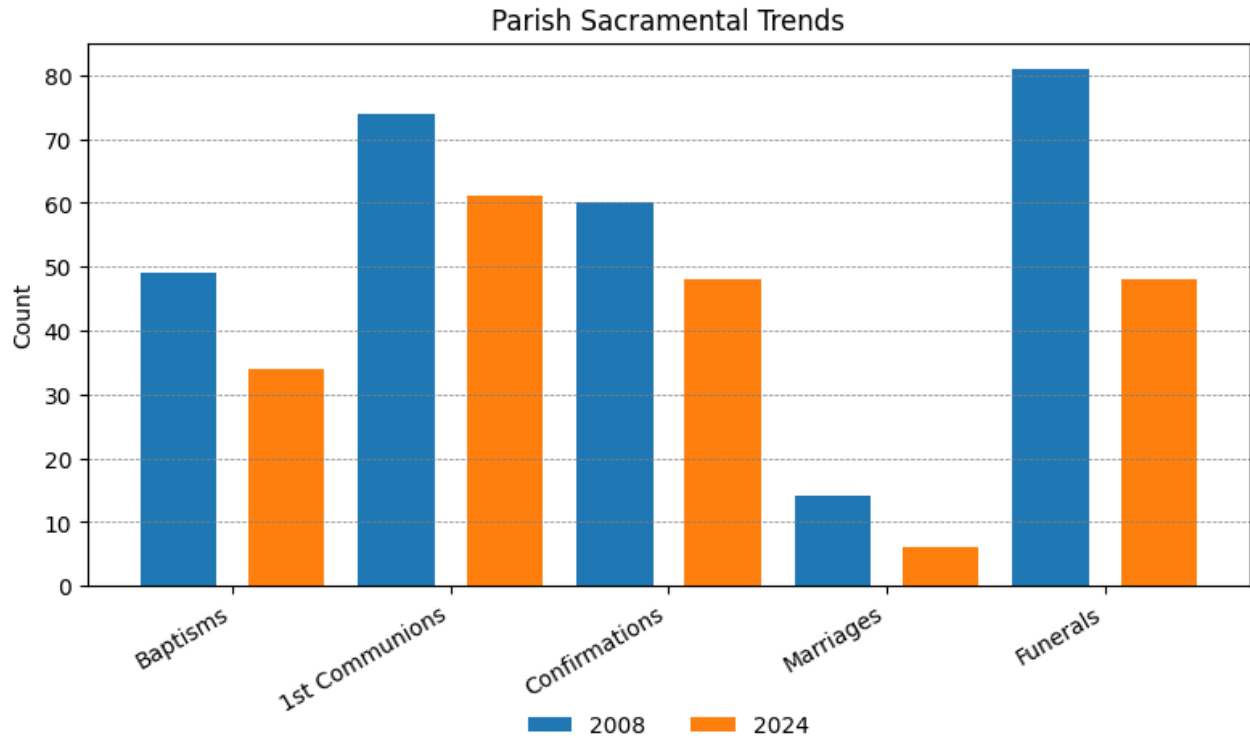
Mass Attendance per October Count



- Between 1998 and 2024, attendance decreased by 62%.
- From 2019 (Pre-COVID) to 2024, attendance decreased an additional 16%.
- Data for your parish is shown in the planning area section of the workbook.

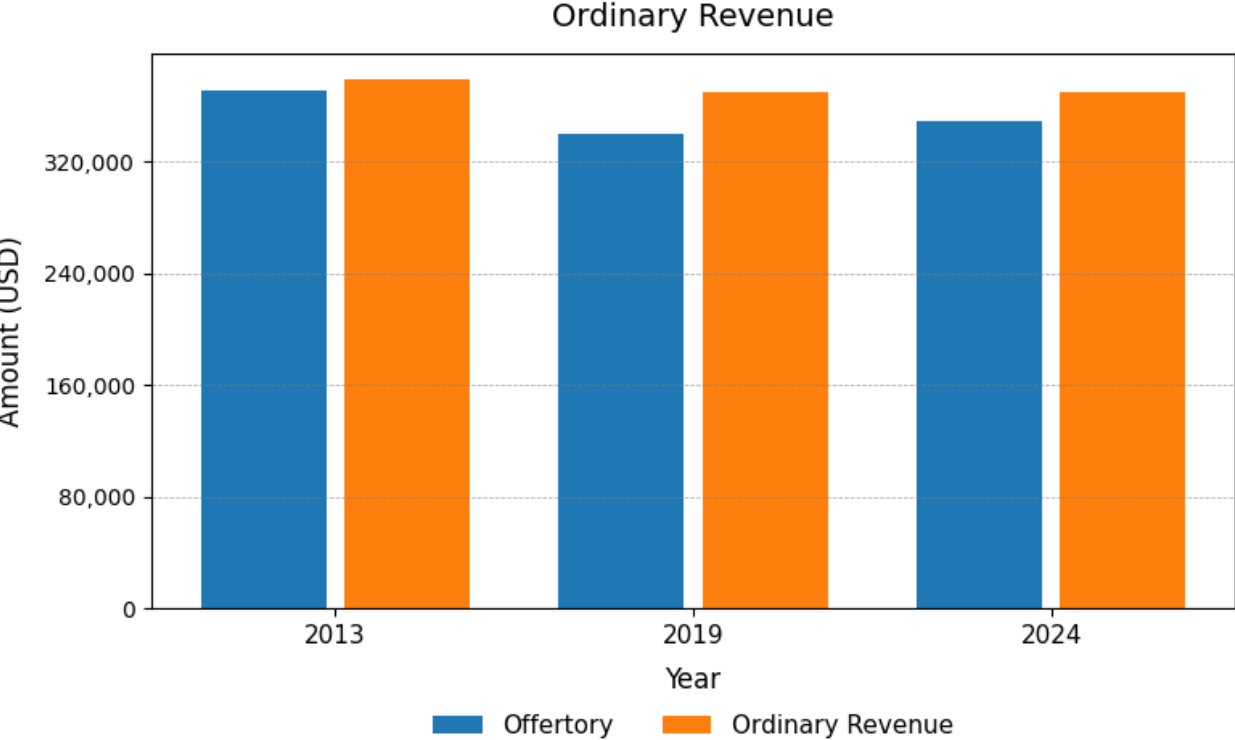
Please Note: Zeros represent that no data was reported in those years.

Parish Sacramental Trends



- Baptisms decreased from 49 in 2008 to 34 in 2024 — a 31% decrease.
- 1st Communions fell from 74 in 2008 to 61 in 2024 — a 18% decrease.
- Confirmations decreased from 60 in 2008 to 48 in 2024 — a 20% decrease, while marriages declined from 14 in 2008 to 6 in 2024.
- Funerals decreased from 81 in 2008 to 48 in 2024 — a 41% decrease.

Parish Sacramental Trends



- From 2013 to 2024, offertory collections decreased by 6% while Ordinary Revenue declined by 2%.
- From 2019 to 2024, offertory rose slightly (2%), from \$339,919 to \$348,216.
- Ordinary Revenue, rose by 0% over the same period (from \$369,986 to \$369,460).