



# WE ARE HIS **WITNESSES**

- *Undertaking the Journey of Pastoral Conversion*
- *in the Archdiocese of Newark*

## PARISH WORKBOOK

(Revised 09.2025)



ARCHDIOCESE  
of NEWARK

**God of Mercy,  
you call the Archdiocese of Newark to witness to our faith in Jesus Christ.  
As we undertake the journey of pastoral conversion,  
    endow us with your gifts of communion, courage and compassion.  
Help us to fulfill the mission of Jesus and his Church  
    through convincing outreach, vibrant parishes and effective ministries.  
Raise up selfless and energetic leaders to serve the Church with fidelity and zeal.  
May we, the Church of Newark in Bergen, Essex, Hudson, and Union Counties,  
    be sustained and strengthened by your grace.  
May we, the People of God, discern and follow the promptings of your Holy Spirit.  
May we, your holy people, dedicate our lives as firm disciples of Jesus Christ –  
    Son of God and Son of Mary – wherever we go.  
We ask this and all our prayers through Christ our Lord.  
Amen.**



# An Invitation to Pastoral Conversion

When I look at the Church in northern New Jersey, I see a vibrant and diverse Catholic community...I also see an archdiocese, empowered by the Holy Spirit, that is not afraid to confront its challenges and that adapts and grows, embracing new opportunities as the world around us changes.

If you asked me today what my vision is for the Church in northern New Jersey, I would make my own Pope Francis' words from *Evangelii Gaudium* (#25):

“I hope that all communities will devote the necessary effort to advancing along the path of a pastoral and missionary conversion which cannot leave things as they presently are.”

– **Cardinal Joseph W. Tobin**

*We Are His Witnesses: A Pastoral Letter to the Clergy, Religious, and Lay Faithful of the Archdiocese of Newark (2025), page 2*



# Why Do We Need “Pastoral Conversion?”

In North America, we have moved from a period of “**Christendom**” (*Christianity as the dominant cultural influence*) to a “**New Apostolic Age**” (*Christianity as merely one influence among others*).

What does this mean? Those who came to Church because it was the “conventional thing to do” aren’t any longer. Those with no religious conviction are keeping their distance. Those who come to Church because of ties to the past are not sustaining a discipleship needed to confront secular culture.

Responding to the “signs of the times” requires a renewed focus on evangelization and the Great Commission:

*Go, therefore, and make disciples of all nations, baptizing them in the name of the Father, and of the Son, and of the Holy Spirit, teaching them to observe all that I have commanded you. (Matthew 28:19–20)*





**In order for the journey of the Word to continue, the Christian community must make a determined missionary decision ‘capable of transforming everything, so that the Church’s customs, ways of doing things, times and schedules, language and structures can be suitably channeled for the evangelization of today’s world rather than for her self-preservation.’**

*The Pastoral Conversion of the Parish Community in the Service of the Evangelizing Mission of the Church (2020) #5*



# What is “Pastoral Conversion?”

Pastoral Conversion is a call to parish communities to evangelize and reform.

1. Digital culture and increased mobility have interrupted the territorial assumptions that parishes are based on (#8). The current parish model no longer adequately corresponds to the many expectations of the faithful (#16).
2. Parishes must “exude that spiritual dynamic of evangelization” or “run the risk of becoming self-referential and fossilized” (#17).
3. Priests, deacons, consecrated men and women, and the laity have the obligation to “cooperate in building up the singular body of Christ” (#28). The work of the parish is the responsibility of “the whole community” and all the baptized are “protagonists of evangelization” (#39). Each member of the community should be “responsible and directly involved in caring for the needs of the Church” (#40).

Summarized points drawn from *“The Pastoral Conversion of the Parish Community in the Service of the Evangelizing Mission of the Church (2020)”*



# What is “We Are His Witnesses”?

The “We Are His Witnesses” pastoral planning process seeks to support pastoral conversion in the parishes of the Archdiocese of Newark as a response to:

1. the needs and opportunities presented by the changing landscape of the Archdiocese,
2. the needs and opportunities discerned in the Synod on Synodality, Encuentro process, etc.,
3. the hopes and needs shared by clergy for a comprehensive vision and plan for the Archdiocese, and
4. the desire of Archdiocesan pastoral offices to support parishes in ongoing pastoral conversion and discipleship efforts.



# Essential Questions To Guide Us

- 1. Where are we today?** What are the opportunities and challenges we face in the changing landscape of northern New Jersey? How can we more effectively embrace the concept of synodality as a way of being Church? How can we develop and sustain a bold missionary outreach here in northern New Jersey?
- 2. Where is God calling us to go?** What new opportunities is the Holy Spirit opening for us as we proclaim the joy of the Gospel in the diverse neighborhoods of Bergen, Essex, Hudson, and Union counties? How can we respond to the growing desire for life-long faith formation and spiritual renewal? How do we develop and sustain a deeper sense of co-responsibility and collaboration among leadership here in our archdiocese?
- 3. How will we get there together?** What changes do we need to make in our pastoral ministries, systems, and structures to meet the demands of pastoral conversion and missionary discipleship, both now and in the years ahead? How can we better use the regional structures to encourage collaboration among parishes and promote the concepts of subsidiarity and solidarity? How do we engage in pastoral planning that truly is grounded in our mission?



# “We Are His Witnesses” Guiding Concepts

## OUR PLANNING OUTCOMES

- 1. Prayer:** *We will engage all individual Catholics to prayerfully consider what it means to be “His witnesses,” how to respond to the call to conversion and discipleship, and how to better journey together.*
- 2. Plan:** *We will articulate a plan for comprehensive Catholic presence across the Archdiocese built upon synodality, subsidiarity, and solidarity; integrating evangelization and outreach, pastoral care, and long-term sustainability.*
- 3. Support:** *We will develop Archdiocesan resources, support, and accompaniment for priests, deacons, and lay leaders to assist in the local envisioning and implementation process.*

## OUR ESSENTIAL QUESTIONS:

- Where are we today?
- Where is God calling us to go?
- How will we get there together?

## OUR PROCESS HALLMARKS:

- Synodal discernment
- Pastoral conversion
- Missionary discipleship
- Collaboration and co-responsibility



# Areas of Mission Focus

01.

## Evangelization and Outreach

How will we share the Gospel with all people in our area?

- Catholic presence
- Outreach to youth, young adults, and families
- Discipleship formation
- Social outreach and engagement
- Welcome and hospitality

02.

## Pastoral Care of the Faithful

How will we care for all Catholics in our parish communities?

- Vibrant liturgy
- Lifelong faith formation and Catholic education
- Well-formed pastoral ministers
- Ministry to youth, young adults, and families

03.

## Long-Term Sustainability

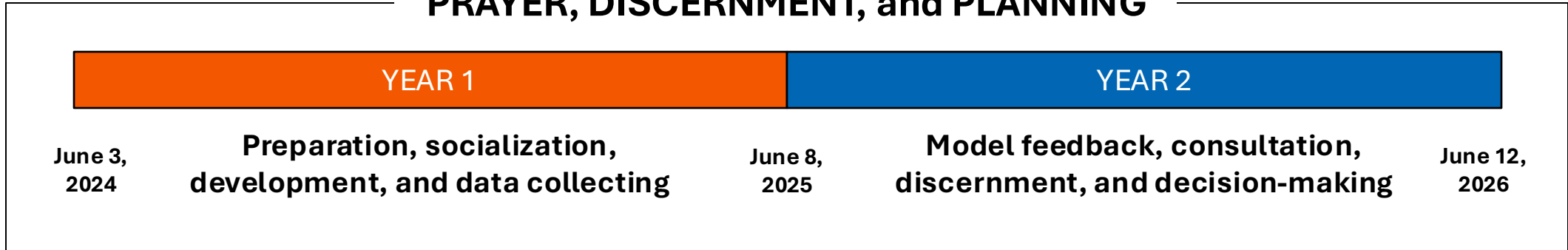
How will we provide support for parishes into the future?

- Invested and engaged lay leaders
- Resources to support and sustain evangelization and pastoral care
- Resources to maintain physical structures and Catholic presence
- Supportive context for evangelization and growth

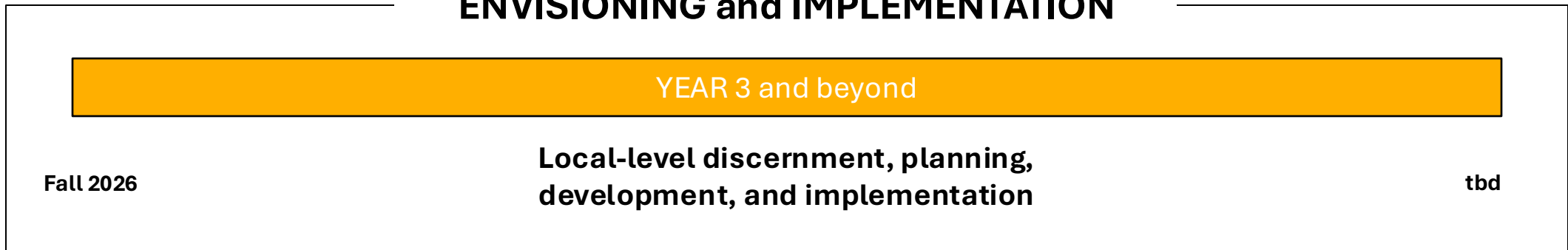


# “We Are His Witnesses” Planning Timeline

## PRAYER, DISCERNMENT, and PLANNING



## ENVISIONING and IMPLEMENTATION



# “We Are His Witnesses” Participants



- As Archbishop, Cardinal Tobin makes any and all decisions.
- His leadership is supported by the groups in orange.
- Groups in blue provide ongoing input and feedback.
- Groups in yellow support the various phases and tasks of the process.



# About this Workbook

The workbook should be used as an *internal* resource to help pastors and other parish leaders reflect on the current strengths and opportunities for future growth of ministry and evangelization in each planning area. Workbook data was submitted by each parish to the Archdiocese. The was reviewed and corrected by parish leaders in the summer of 2025.

## CONFIDENTIALITY STATEMENT:

The information being provided to you is shared in the context of your participation in the pastoral conversion plan of *We Are His Witnesses*. **It is intended solely for that purpose and is considered confidential.**

This material may not be shared—whether in hard copy, digital form, verbally or by any other means —with any other individual or entity without the express written permission of the Archdiocese.



# Glossary of Terms

**Archbishop** An archbishop oversees the ministerial and administrative life of the archdiocese, which is made up of local communities (parishes) of the faithful.

**Archdiocese** The parishes that an archbishop shepherds. The Archdiocese of Newark comprises 212 parishes in four counties in northern New Jersey, Bergen, Essex, Hudson and Union, and serves approximately 1.3 million Catholics.

**Areas of Mission Focus** The three prioritized targets for pastoral planning discussions and decisions: 1. Evangelization and Outreach, 2. Pastoral Care of the Faithful, and 3. Long-Term Sustainability

**Canon Law** Canon law refers to the body of law that governs the internal life and operations of the church.

**Church** A worship site or sacred site dedicated for divine worship for the benefit of the faithful; “church” refers to a building, whereas “parish” refers to a community.

**Deanery** A grouping of parishes within the archdiocese organized by geography and led by a dean (usually a pastor appointed by the archbishop). Deaneries aim to promote pastoral care through collaborative efforts, providing support and resources to parishes within their boundaries. The Archdiocese of Newark includes 27 deaneries.

**Disciple Maker Index (DMI)** A survey tool used to assess parish strengths, opportunities, and areas of growth; it is used to help parishes identify strategies during the implementation phase.

**Evangelization** The proclamation of the Gospel message to invite others to the faith.

**Key Parish Leader (KPL)** Collaborating with the pastor, PPOC, and councils of the parish, KPLs serve as the primary ambassadors of the We Are His Witnesses planning initiative to their fellow parishioners as well as the primary ambassadors of the parish to the Archdiocesan Planning Commission; this is accomplished by providing discussion, feedback, and input during planning consultations.

**Merged** Two or more parishes that have been united in such a way that a new parish is established from them. The new, merged parish has one pastoral council, one finance council, one pastoral vision, one staff, and one set of finances.

**Missionary Discipleship** A continuous process of growing in faith, deepening one’s relationship with God, and striving to live according to the teachings of Jesus Christ that results in both personal transformation and outreach to actively share the Gospel with others.

**Models** One or more viable options for future parish relationships or structures that help meet the Areas of Mission Focus; used to generate discussion, feedback, and input from priests, parish leaders, and parishioners.

**Parish** A community of the faithful within the archdiocese whose pastoral care has been entrusted to a pastor; a community of people who worship together in a particular place (territory).

**Parish Point of Contact (PPOC)** Collaborating with the pastor, the PPOC serves as the main conduit of information and coordination of logistics for the We Are His Witnesses planning initiative to their parish community.



# Glossary of Terms (cont.)

**Parish Workbook** A collection of information about the parish, including demographics, sacramental trends, finances, ministries, community profile, history, and more; used to assist discussions and discernment related to pastoral conversion.

**Parochial Vicar** Formally called an associate pastor. A priest who serves as a co-worker with the pastor and ministers to parishioners under the authority of the pastor.

**Pastor** A priest entrusted with the pastoral care and leadership under the authority of the archbishop; responsible for administering the sacraments, instructing the congregation in the doctrine of the Church, and providing other ministerial services to the people of the parish.

**Pastoral Care** Refers to the caring work of the Church; the comprehensive support offered to individuals, especially those in need; it includes spiritual and religious needs, accompaniment, sacramental support, and support that addresses specific needs, such as those of youth, married couples, migrants, the sick, etc.

**Pastoral Conversion** The call to parishes to renew and transform structures and practices for the evangelization of today's world

**Pastoral Planning** A process of discernment to understand the local church's mission, respond to changing times, and foster a vibrant faith community.

**Pastorate** One or more parishes entrusted to the pastoral care of a pastor

**Planning Area** A geographic region within the Archdiocese; established only to help present and discuss possible parish models.

**Relegation** A church building that will no longer be used for worship and will transfer ownership or be sold by a parish. The process is governed by canon law and requires a decree from the archbishop.

**Solidarity** The affirmation that all people are God's children, connected as sisters and brothers; it emphasizes our interdependence, where we need each other to live in peace and harmony. It is key to living God's love by helping others and creating a united, compassionate world.

**Subsidiarity** The principle that decisions should be made at the most local level possible, ensuring everyone has a voice and can contribute; it empowers individuals and communities to participate in decisions that affect them.

**Synodality** The act of engaging in authentic dialogue within and beyond the Church, fostering a united, inclusive, and missionary community.





ARCHDIOCESE  
of NEWARK



# Territory for Evangelization

- The Archdiocese of Newark encompasses the territory of four counties in northern New Jersey: Bergen, Essex, Hudson, and Union.
- The general population of this region is approximately 3.1 million people.
- There are currently 212 canonical parishes within the boundaries of the Archdiocese.
- The Catholic population of this region is approximately 1.37 million people.
- The Catholic population comprises approximately 44% of the general population.



# Our Current Reality

1. The general population of the four counties in the Archdiocese is projected to grow, along with opportunities for evangelization. [**see page #18**]
2. While Mass attendance and the number of individuals receiving Sacraments are rebounding since the COVID-19 pandemic, the overall trend is still down (below 2019 levels). [**see pages #19-20**]
3. Parishes are decreasing in size, based on participation and Mass attendance. [**see page #21**]
4. Given current age distribution and ordination trends, the number of priests available to serve as parish pastors will decrease significantly over the next 20 years. [**see pages #22-23**]



# General Population Trend and Forecast



- The total population and number of households within the territory of the Archdiocese is expected to grow by 3% or more.
- This growth is expected in each of the four counties.
- This is increase in general population, meaning an increase in both the Catholic and non-Catholic population.

# Mass Attendance by County



|        | Since 2019 | Since 2013 | Since 1998 |
|--------|------------|------------|------------|
| Bergen | -15%       | -24%       | -45%       |
| Essex  | -17%       | -28%       | -42%       |
| Hudson | -26%       | -27%       | -47%       |
| Union  | -15%       | -19%       | -40%       |
| RCAN*  | -18%       | -24%       | -44%       |

\* NOTE: "RCAN" stands for the "Roman Catholic Archdiocese of Newark"

**Data is self-reported annually by each parish.**

# Sacramental Trends



|                  | Since 2019 | Since 2013 | Since 2008 |
|------------------|------------|------------|------------|
| Baptisms         | -12%       | -24%       | -35%       |
| First Communions | -14%       | -18%       | -32%       |
| Confirmations    | -14%       | -13%       | -26%       |
| Marriages        | -22%       | -25%       | -50%       |
| Funerals         | -20%       | -24%       | -36%       |

*Data is self-reported annually by each parish.*



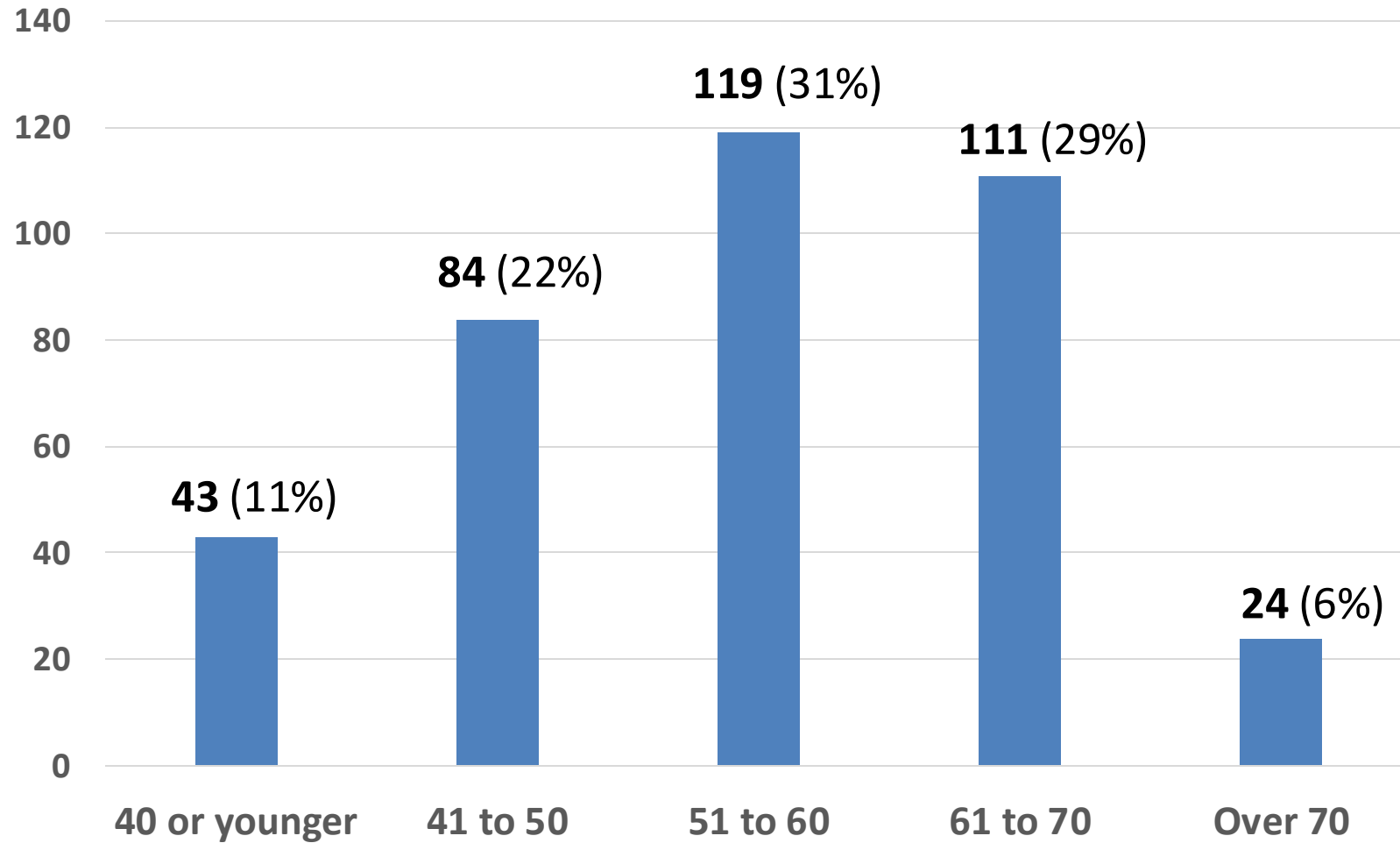
# Number of Parishes By Mass Attendance

# of Parishes



- Average Mass attendance per parish was 936 in 2013. It fell to 707 in 2024, a 24% decrease.
- 4 parish had an average attendance of under 200 people in 2013. This rose to 12 parishes in 2024.
- 12 parishes had more than 2,000 attendees per weekend in 2013. This fell to only 7 parishes in 2024.

# Active RCAN Priests by Age Group



- There were 381 priests of the Archdiocese of Newark in active ministry in 2024.
- In 20 years, the priests currently aged 50 and over will be retired from active ministry.
- 254 of all active priests were over the age of 50 (66% of the total).
- 127 of all active priests were under the age of 50 (34% of the total).

# Projected Number of RCAN Priests



- The projection models the number of priests given an average of 1 to 4 ordinations per year.
- The projection assumes a usual retirement age of 70 with some priests remaining until 75.
- The number of priests available to serve as pastor in 2024 was 205. This is expected to decrease to between 104 and 131 by 2044, depending on the number of ordinations.



# OUR PLANNING AREA

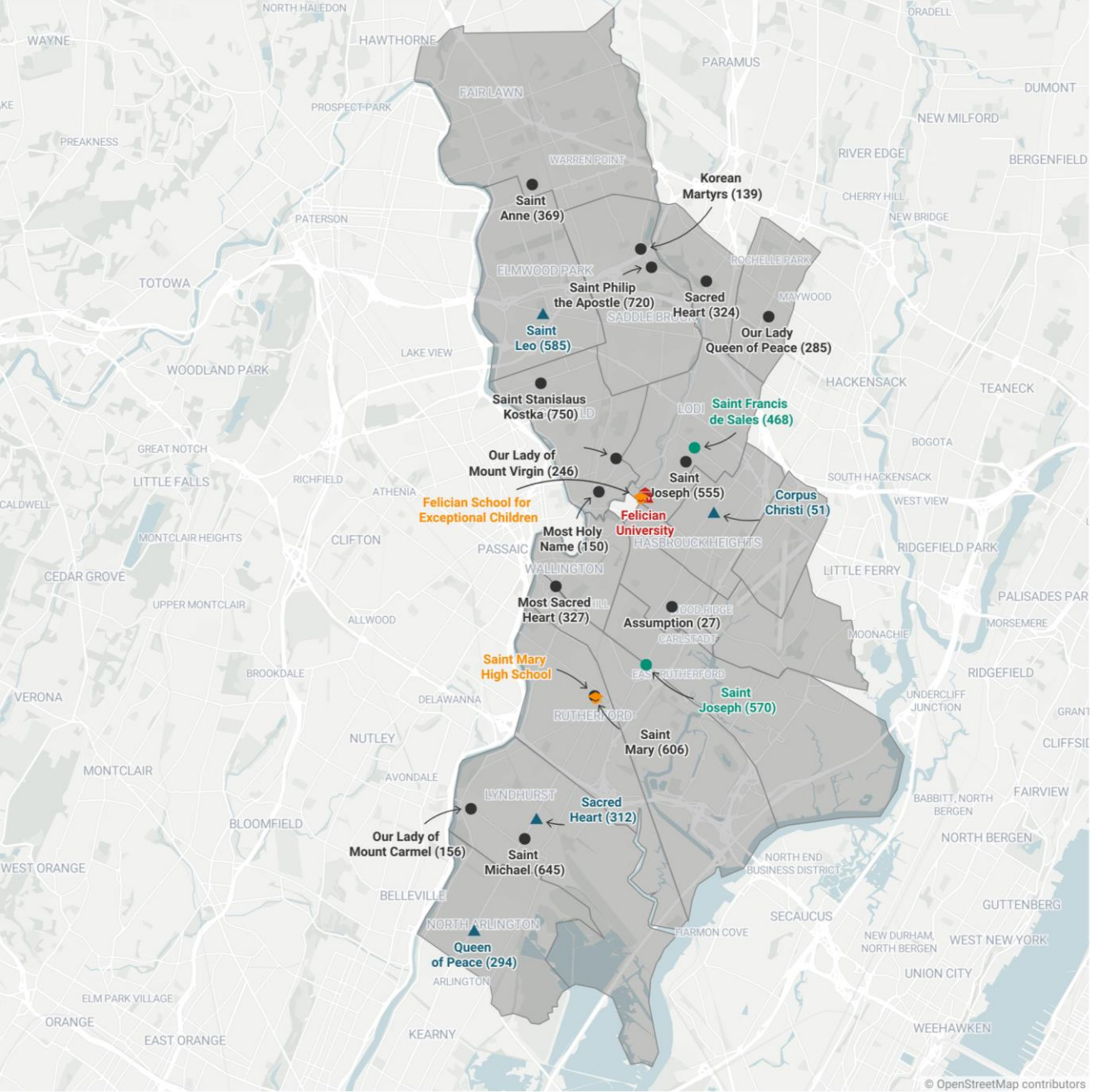
## Southwest Bergen County



# Southwest Bergen

About our planning area:

- The planning area is the southwestern area of Bergen county shown in the map on the prior page.
- The planning area includes 20 parishes, 4 elementary schools and 1 high school.
- There are currently 32 priests assigned to the planning area.
- Parishes are generally within 3 miles of a nearby parish.



● Parish      ● Parish with a cemetery      ▲ Parish with a Catholic School      🎓 Catholic High School

🏠 Catholic Campus Ministry



# Planning Area Population Trends

| Area Name                 | 2000    | 2010    | 2020    | Estimated | Change in % |          |          |
|---------------------------|---------|---------|---------|-----------|-------------|----------|----------|
|                           | Census  | Census  | Census  | 2023      | 23 vs 20    | 23 vs 10 | 23 vs 00 |
| Carlstadt borough         | 5,917   | 6,127   | 6,372   | 6,333     | -0.6%       | 3.4%     | 7.0%     |
| East Rutherford borough   | 8,716   | 8,913   | 10,022  | 10,421    | 4.0%        | 16.9%    | 19.6%    |
| Elmwood Park borough      | 18,925  | 19,403  | 21,422  | 21,256    | -0.8%       | 9.6%     | 12.3%    |
| Fair Lawn borough         | 31,637  | 32,457  | 34,927  | 35,564    | 1.8%        | 9.6%     | 12.4%    |
| Garfield city             | 29,786  | 30,487  | 32,655  | 32,456    | -0.6%       | 6.5%     | 9.0%     |
| Hasbrouck Heights borough | 11,662  | 11,842  | 12,125  | 12,030    | -0.8%       | 1.6%     | 3.2%     |
| Lodi borough              | 23,971  | 24,136  | 26,206  | 25,832    | -1.4%       | 7.0%     | 7.8%     |
| Lyndhurst township        | 19,383  | 20,554  | 22,519  | 22,276    | -1.1%       | 8.4%     | 14.9%    |
| Maywood borough           | 9,523   | 9,555   | 10,080  | 10,023    | -0.6%       | 4.9%     | 5.3%     |
| Moonachie borough         | 2,754   | 2,708   | 3,133   | 3,108     | -0.8%       | 14.8%    | 12.9%    |
| North Arlington borough   | 15,181  | 15,392  | 16,457  | 16,370    | -0.5%       | 6.4%     | 7.8%     |
| Rochelle Park township    | 5,528   | 5,530   | 5,814   | 5,833     | 0.3%        | 5.5%     | 5.5%     |
| Rutherford borough        | 18,110  | 18,061  | 18,834  | 18,852    | 0.1%        | 4.4%     | 4.1%     |
| Saddle Brook township     | 13,155  | 13,659  | 14,294  | 14,386    | 0.6%        | 5.3%     | 9.4%     |
| Teterboro borough         | 18      | 67      | 61      | 71        | 16.4%       | 6.0%     | 294.4%   |
| Wallington borough        | 11,583  | 11,335  | 11,868  | 11,825    | -0.4%       | 4.3%     | 2.1%     |
| Wood-Ridge borough        | 7,644   | 7,626   | 10,137  | 10,197    | 0.6%        | 33.7%    | 33.4%    |
| Total Planning Area       | 233,493 | 237,852 | 256,926 | 256,833   | 0.0%        | 8.0%     | 10.0%    |

- The planning area has grown 10% since 2000, with the bulk of that growth coming from 2010 to 2020. The area has been stable overall since 2020.
- Largest communities are Fair Lawn, Garfield and Lodi.
- All communities have grown. The fastest growing communities are in the southern part of the planning area (East Rutherford, Woodridge, Lyndhurst, etc.).

Source: United States Census



# Planning Area Demographics

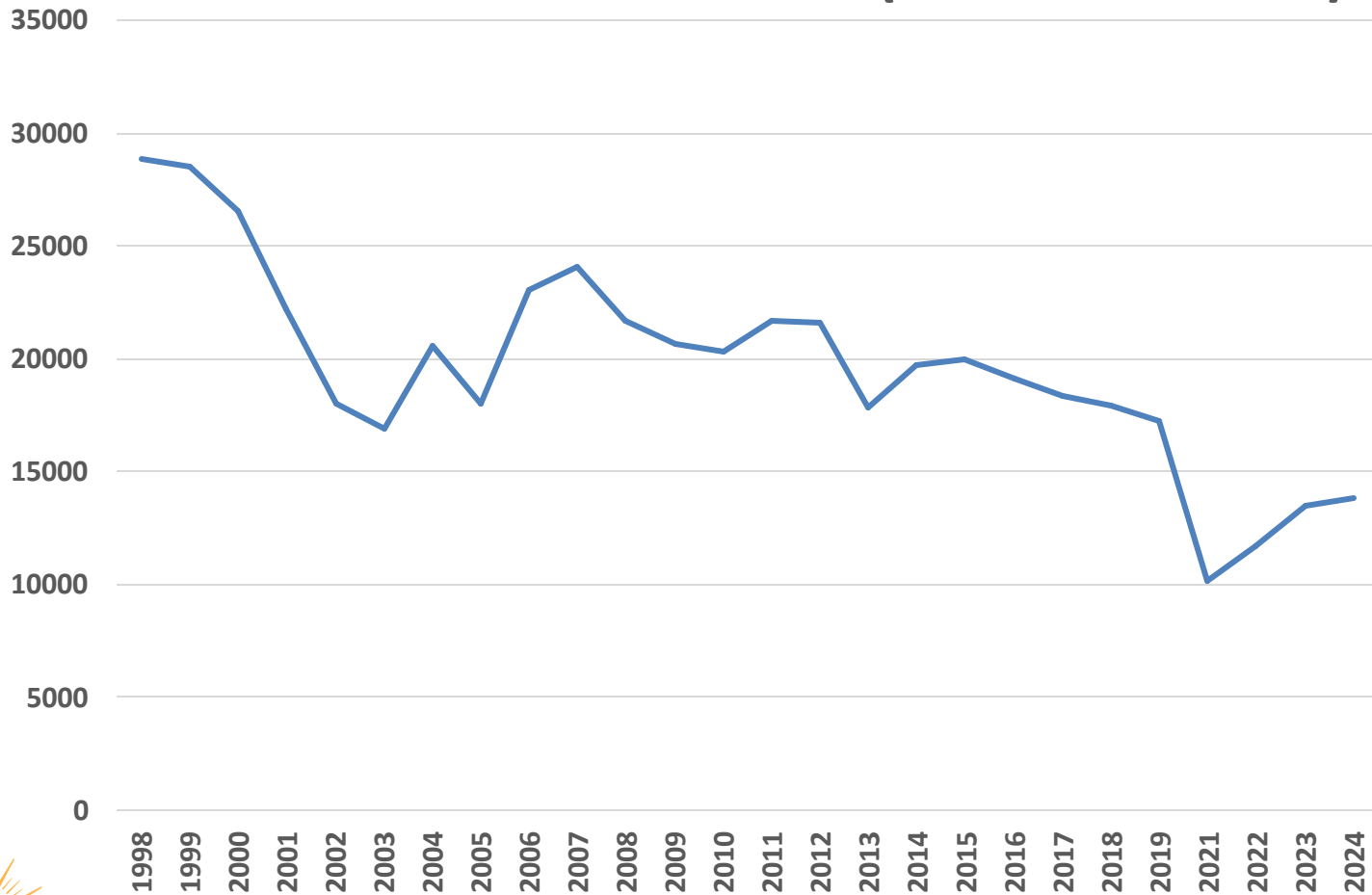
| Planining Area<br>Demographics | Population | Ethnic Composition |          |       |       |       | (\$ 000)<br>Median<br>HH Inc |
|--------------------------------|------------|--------------------|----------|-------|-------|-------|------------------------------|
|                                |            | White              | Hispanic | Black | Asian | Other |                              |
| Carlstadt borough              | 6,333      | 65.7%              | 20.9%    | 0.0%  | 8.9%  | 4.5%  | 89.5                         |
| East Rutherford borough        | 10,421     | 46.6%              | 26.8%    | 4.0%  | 20.8% | 1.8%  | 86.6                         |
| Elmwood Park borough           | 21,256     | 47.0%              | 31.3%    | 9.5%  | 9.7%  | 2.5%  | 95.1                         |
| Fair Lawn borough              | 35,564     | 63.8%              | 13.9%    | 4.2%  | 13.6% | 4.5%  | 139.6                        |
| Garfield city                  | 32,456     | 42.7%              | 47.9%    | 5.2%  | 4.0%  | 0.2%  | 71.4                         |
| Hasbrouck Heights borough      | 12,030     | 51.4%              | 29.0%    | 3.4%  | 11.9% | 4.3%  | 112.0                        |
| Lodi borough                   | 25,832     | 37.9%              | 42.6%    | 8.2%  | 8.2%  | 3.1%  | 79.8                         |
| Lyndhurst township             | 22,276     | 83.4%              | 9.0%     | 0.5%  | 5.4%  | 1.7%  | 95.5                         |
| Maywood borough                | 10,023     | 47.0%              | 27.6%    | 5.3%  | 17.8% | 2.3%  | 112.6                        |
| Moonachie borough              | 3,108      | 27.5%              | 58.0%    | 0.0%  | 14.0% | 0.5%  | 102.2                        |
| North Arlington borough        | 16,370     | 51.7%              | 33.3%    | 1.4%  | 9.0%  | 4.6%  | 95.7                         |
| Rochelle Park township         | 5,833      | 84.1%              | 8.6%     | 0.5%  | 5.9%  | 0.9%  | 108.8                        |
| Rutherford borough             | 18,852     | 55.3%              | 22.8%    | 3.0%  | 14.6% | 4.3%  | 128.4                        |
| Saddle Brook township          | 14,386     | 86.7%              | 6.3%     | 1.2%  | 4.6%  | 1.2%  | 113.6                        |
| Teterboro borough              | 71         | n/a                | n/a      | n/a   | n/a   | n/a   | n/a                          |
| Wallington borough             | 11,825     | 67.0%              | 20.8%    | 3.9%  | 3.7%  | 4.6%  | 77.8                         |
| Wood-Ridge borough             | 10,197     | 51.3%              | 19.6%    | 4.6%  | 22.0% | 2.5%  | 123.9                        |

- Median Household income is generally in line with the New Jersey state average of \$100,000. Eight municipalities are above the average and eight are below.
- Ethnically the largest groups are Whites and Hispanics. Seven communities have an Asian presence greater than 10%.

Source: United States Census

# Planning Area Mass Attendance Trend

## Mass Attendance (October count)



- Mass Attendance has declined 52% since 1998 vs the Archdiocese average of 43% decline.
- Between 1998 and 2019 attendance declined 41%.
- From 2019 (Pre-COVID) to 2024 attendance declined an additional 18%.

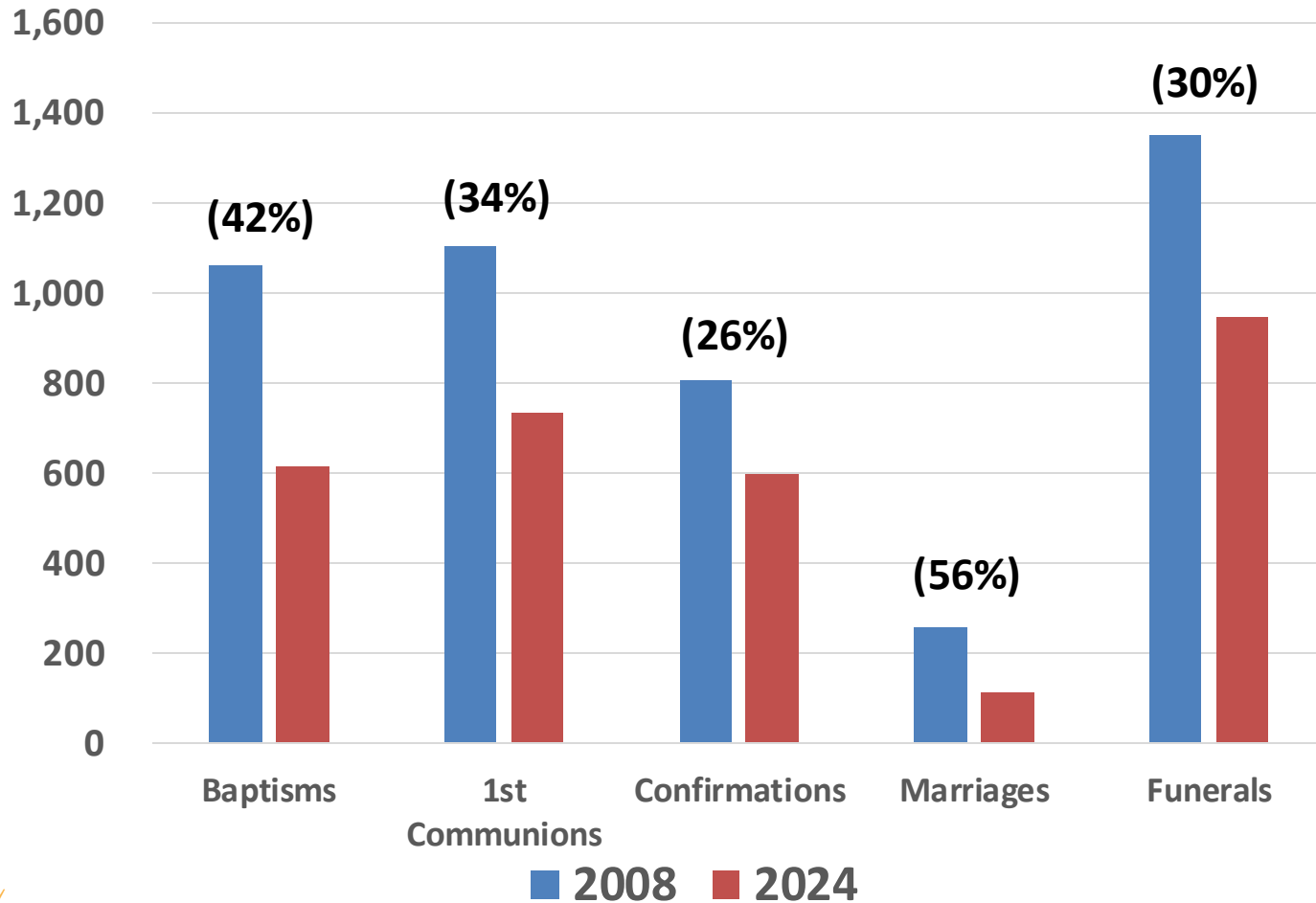
NOTE: No Mass attendance count was taken in 2020.

# Planning Area Mass Attendance Trend

| PARISH NAME                  | TOWN            | 1998   | 2009   | 2019   | 2022   | 2023   | 2024   | 2019 vs 1998 | 2024 vs 2019 | 2024 vs 1998 | # of Masses | Seating Capacity | % Capacity Utilized |
|------------------------------|-----------------|--------|--------|--------|--------|--------|--------|--------------|--------------|--------------|-------------|------------------|---------------------|
| St. Joseph                   | E. Rutherford   | 1,587  | 1,136  | 719    | 534    | 697    | 763    | -55%         | 6%           | -52%         | 5           | 275              | 55%                 |
| St. Leo                      | Elmwood Park    | 1,263  | 1,057  | 857    | 611    | 611    | 781    | -32%         | -9%          | -38%         | 4           | 350              | 56%                 |
| St. Anne                     | Fair Lawn       | 2,139  | 1,891  | 1,301  | 940    | 1,077  | 1,204  | -39%         | -7%          | -44%         | 5           | 1,400            | 17%                 |
| Most Holy Name Church        | Garfield        | 547    | 1,024  | 958    | n/a    | 850    | 953    | 75%          | -1%          | 74%          | 4           | 420              | 57%                 |
| Our Lady of Mt. Virgin       | Garfield        | 1,152  | 803    | 471    | 520    | 507    | 363    | -59%         | -23%         | -68%         | 4           | 350              | 26%                 |
| St. Stanislaus Kostka        | Garfield        | 2,907  | n/a    | 1,398  | 978    | 984    | 948    | -52%         | -32%         | -67%         | 7           | 400              | 34%                 |
| Corpus Christi               | Hasbrouck Hgts. | 2,064  | 1,217  | 885    | 571    | 666    | 642    | -57%         | -27%         | -69%         | 4           | 350              | 46%                 |
| St. Francis DeSales          | Lodi            | 832    | 488    | 701    | 591    | 682    | 641    | -16%         | -9%          | -23%         | 8           | 170              | 47%                 |
| St. Joseph                   | Lodi            | 1,664  | 982    | 680    | 532    | 611    | 650    | -59%         | -4%          | -61%         | 5           | 425              | 31%                 |
| Our Lady of Mt. Carmel       | Lyndhurst       | 897    | 780    | 519    | 375    | 457    | 443    | -42%         | -15%         | -51%         | 4           | 270              | 41%                 |
| Sacred Heart                 | Lyndhurst       | 1,315  | 735    | 595    | 547    | 509    | 494    | -55%         | -17%         | -62%         | 6           | 350              | 24%                 |
| St. Michael                  | Lyndhurst       | 995    | 775    | 629    | 365    | 368    | 395    | -37%         | -37%         | -60%         | 4           | 480              | 21%                 |
| Queen of Peace               | North Arlington | 2,331  | 2,053  | 1,159  | 865    | 924    | 1,043  | -50%         | -10%         | -55%         | 5           | 1,500            | 14%                 |
| Sacred Heart                 | Rochelle Park   | 930    | 861    | 829    | 697    | 915    | 949    | -11%         | 14%          | 2%           | 4           | 350              | 68%                 |
| St. Mary                     | Rutherford      | 2,078  | 1,521  | 1,305  | 825    | 820    | 925    | -37%         | -29%         | -55%         | 4           | 400              | 58%                 |
| Church of the Korean Martyrs | Saddle Brook    | 618    | 970    | 652    | 453    | 419    | 435    | 6%           | -33%         | -30%         | 4           | 500              | 22%                 |
| St. Philip the Apostle       | Saddle Brook    | 1,515  | 1,051  | 763    | 421    | 462    | 458    | -50%         | -40%         | -70%         | 5           | 500              | 18%                 |
| Most Sacred Heart            | Wallington      | 1,826  | 1,581  | 1,393  | 923    | 898    | 859    | -24%         | -38%         | -53%         | 8           | 300              | 36%                 |
| Assumption                   | Wood-ridge      | 1,188  | 788    | 599    | 505    | 495    | 550    | -50%         | n/a          | n/a          | 4           | 500              | 28%                 |
| Total Planning Area          |                 | 27,848 | 19,713 | 16,413 | 11,253 | 12,952 | 13,496 | -41%         | -18%         | -52%         | 94          |                  |                     |

- All parishes in the planning area except two have experienced a significant attendance decline.
- Percent of church capacity utilized given 2024 attendance and the number of Masses celebrated varies, but is less than 40%, with eight exception.

# Planning Area Mass Sacramental Trends



- Sacramental trends are declining in line with Archdiocesan averages.
- Funerals exceed baptisms by a 1.55 to 1 ratio, near the Archdiocesan average of 1.5 Baptisms to 1 Funeral.
- There are 3,536 children in religious education in the planning area in the 2023-24 school year.
- Total registered parishioners are 70,439 and there are 28,647 registered families in 2024.

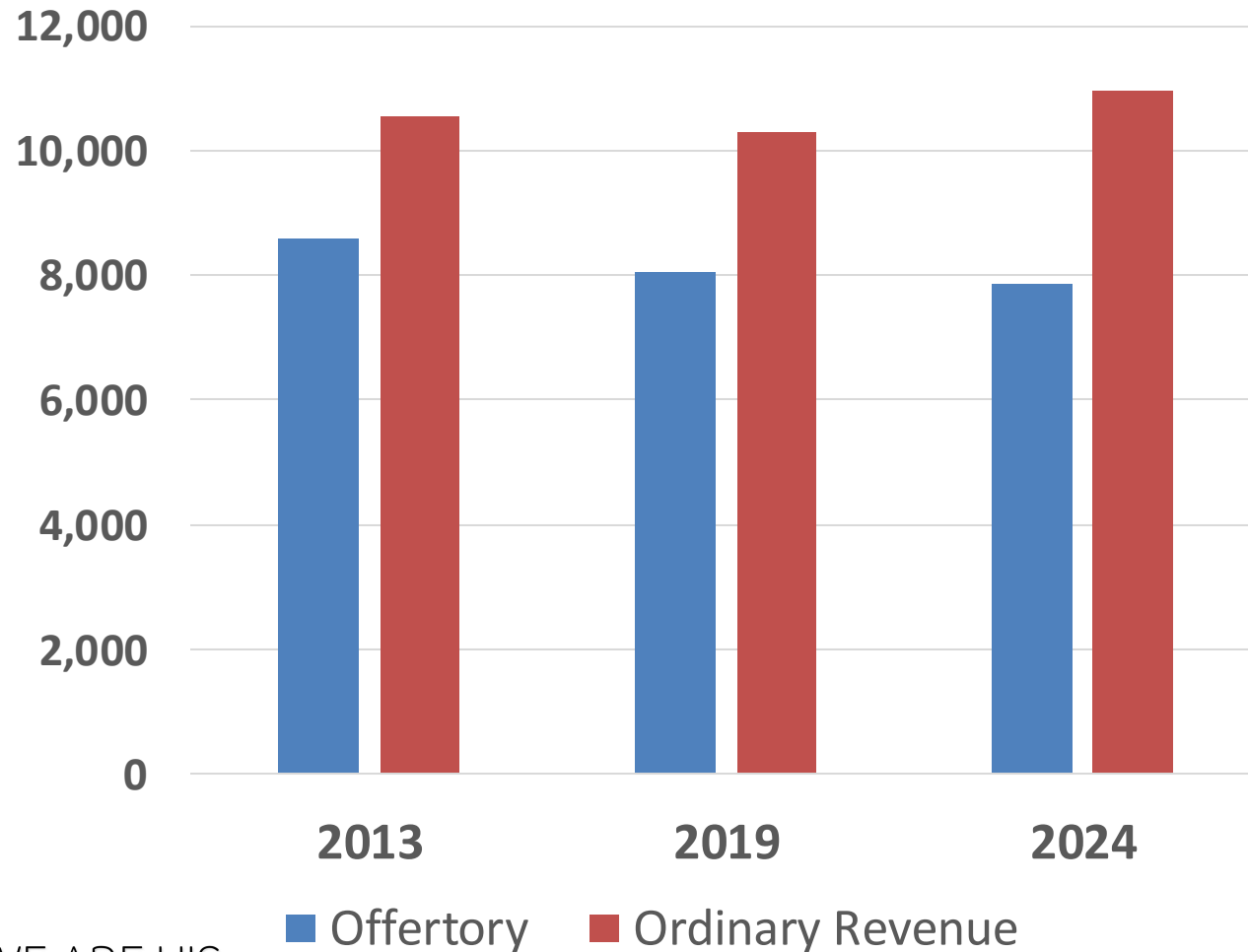
# Planning Area Mass Sacramental Trends

| PARISH NAME                  | TOWN            | BAPTISMS     |            |            |            |            | FIRST COMMUNIONS |            |            |            |            | CONFIRMATIONS |            |            |            |            |
|------------------------------|-----------------|--------------|------------|------------|------------|------------|------------------|------------|------------|------------|------------|---------------|------------|------------|------------|------------|
|                              |                 | 2008         | 2013       | 2019       | 2023       | 2024       | 2008             | 2013       | 2019       | 2023       | 2024       | 2008          | 2013       | 2019       | 2023       | 2024       |
| St. Joseph                   | E. Rutherford   | 78           | 33         | 43         | 33         | 25         | 97               | 27         | 33         | 27         | 35         | 71            | 12         | 21         | 12         | 17         |
| St. Leo                      | Elmwood Park    | 43           | 26         | 33         | 51         | 55         | 59               | 51         | 43         | 68         | 35         | 50            | 52         | 38         | 35         | 65         |
| St. Anne                     | Fair Lawn       | 109          | 80         | 98         | 80         | 69         | 122              | 56         | 105        | 56         | 75         | 101           | 61         | 74         | 61         | 65         |
| Most Holy Name Church        | Garfield        | 88           | 59         | 65         | 59         | -          | 88               | 46         | 64         | 46         | -          | -             | 19         | 35         | 19         | -          |
| Our Lady of Mt. Virgin       | Garfield        | 61           | 44         | 31         | 44         | 29         | 29               | 23         | 30         | 23         | 20         | 14            | 13         | 19         | 13         | 17         |
| St. Stanislaus Kostka        | Garfield        | -            | 13         | 21         | 13         | 13         | -                | 38         | 35         | 38         | 26         | -             | 28         | 33         | 28         | 22         |
| Corpus Christi               | Hasbrouck Hgts. | 57           | 64         | 40         | 39         | 39         | 107              | 111        | 79         | 82         | 69         | 73            | 114        | 80         | 63         | 74         |
| St. Francis DeSales          | Lodi            | 46           | 23         | 40         | 23         | 17         | 19               | 30         | 13         | 30         | 45         | 21            | 23         | 11         | 23         | 23         |
| St. Joseph                   | Lodi            | 57           | 28         | 50         | 28         | 29         | 39               | 21         | 44         | 21         | 18         | -             | 15         | 22         | 15         | 21         |
| Our Lady of Mt. Carmel       | Lyndhurst       | 46           | 16         | 25         | 16         | 15         | 29               | 17         | 21         | 17         | 19         | 41            | 14         | 23         | 14         | 8          |
| Sacred Heart                 | Lyndhurst       | 49           | 39         | 37         | 34         | 42         | 74               | 73         | 47         | 60         | 61         | 60            | 45         | 46         | 45         | 48         |
| St. Michael                  | Lyndhurst       | 34           | 17         | 34         | 17         | 11         | 17               | 12         | 18         | 12         | 10         | 17            | 14         | 17         | 14         | 9          |
| Queen of Peace               | North Arlington | 129          | 113        | 96         | 113        | 81         | 85               | 83         | 79         | 83         | 91         | 81            | 57         | 51         | 57         | 62         |
| Sacred Heart                 | Rochelle Park   | 56           | 35         | 30         | 35         | 48         | 31               | 36         | 37         | 36         | 27         | 30            | 25         | 35         | 25         | 21         |
| St. Mary                     | Rutherford      | 65           | 50         | 74         | 50         | 41         | 79               | 55         | 70         | 55         | 55         | 87            | 49         | 77         | 49         | 45         |
| Church of the Korean Martyrs | Saddle Brook    | 27           | 17         | 18         | 17         | 6          | 31               | 12         | 11         | 12         | 18         | 21            | 7          | 3          | 7          | 8          |
| St. Philip the Apostle       | Saddle Brook    | 54           | 52         | 24         | 25         | 25         | 69               | 43         | 34         | 43         | 48         | 60            | 64         | 40         | 39         | 36         |
| Most Sacred Heart            | Wallington      | 35           | 14         | 41         | 14         | 26         | 68               | 32         | 50         | 32         | 26         | 4             | 28         | 55         | 28         | 25         |
| Assumption                   | Wood-ridge      | 27           | 34         | 36         | 42         | 45         | 61               | 38         | 38         | 29         | 54         | 77            | 45         | 39         | 28         | 31         |
| <b>Total Planning Area</b>   |                 | <b>1,061</b> | <b>757</b> | <b>836</b> | <b>733</b> | <b>616</b> | <b>1,104</b>     | <b>804</b> | <b>851</b> | <b>770</b> | <b>732</b> | <b>808</b>    | <b>685</b> | <b>719</b> | <b>575</b> | <b>597</b> |

# Planning Area Mass Sacramental Trends

| PARISH NAME                  | TOWN            | MARRIAGES  |            |            |            |            | FUNERALS     |              |              |              |            | RELIGIOUS EDUCATION |              |              |              |              |
|------------------------------|-----------------|------------|------------|------------|------------|------------|--------------|--------------|--------------|--------------|------------|---------------------|--------------|--------------|--------------|--------------|
|                              |                 | 2008       | 2013       | 2019       | 2023       | 2024       | 2008         | 2013         | 2019         | 2023         | 2024       | 2019-2020           | 2020-2021    | 2021-2022    | 2022-2023    | 2023-2024    |
| St. Joseph                   | E. Rutherford   | 22         | 8          | 12         | 8          | 12         | 65           | 26           | 54           | 31           | 24         | -                   | 97           | -            | 134          | 120          |
| St. Leo                      | Elmwood Park    | 12         | 10         | 5          | 2          | 4          | 94           | 67           | 61           | 41           | 61         | -                   | 84           | -            | 157          | 145          |
| St. Anne                     | Fair Lawn       | 29         | 13         | 14         | 13         | 13         | 126          | 130          | 95           | 130          | 101        | -                   | 470          | -            | 442          | 450          |
| Most Holy Name Church        | Garfield        | 12         | 11         | 4          | 11         | -          | 48           | -            | 51           | -            | -          | -                   | 50           | 101          | 130          | 155          |
| Our Lady of Mt. Virgin       | Garfield        | 14         | 7          | 9          | 7          | 17         | 101          | 88           | 95           | 88           | 69         | 129                 | 90           | 83           | 106          | 92           |
| St. Stanislaus Kostka        | Garfield        | -          | 4          | 11         | 4          | 3          | -            | 41           | 33           | 41           | 36         | 148                 | 106          | 106          | 83           | 75           |
| Corpus Christi               | Hasbrouck Hgts. | 14         | 19         | 9          | 9          | 5          | 98           | 74           | 105          | 82           | 80         | -                   | 339          | 344          | 321          | 314          |
| St. Francis DeSales          | Lodi            | 5          | 5          | 2          | 5          | 4          | 64           | 15           | 42           | 15           | 32         | -                   | -            | 109          | 150          | 175          |
| St. Joseph                   | Lodi            | 12         | 1          | 8          | 1          | 2          | 91           | 67           | 63           | 67           | 57         | -                   | 140          | -            | 123          | 110          |
| Our Lady of Mt. Carmel       | Lyndhurst       | 9          | -          | 2          | -          | 2          | 47           | 59           | 38           | 59           | 43         | 134                 | 114          | 104          | -            | 90           |
| Sacred Heart                 | Lyndhurst       | 14         | 13         | 7          | 8          | 6          | 81           | 114          | 104          | 52           | 48         | 143                 | -            | 109          | 130          | 141          |
| St. Michael                  | Lyndhurst       | 15         | 8          | 2          | 3          | 5          | 51           | 28           | 50           | 28           | 31         | -                   | -            | -            | -            | 55           |
| Queen of Peace               | North Arlington | 37         | 16         | 17         | 16         | 9          | 147          | 114          | 144          | 114          | 113        | 301                 | 246          | 274          | 270          | 311          |
| Sacred Heart                 | Rochelle Park   | 11         | 7          | 8          | 7          | 7          | 39           | 25           | 50           | 25           | 24         | 190                 | 159          | 163          | 173          | 175          |
| St. Mary                     | Rutherford      | 14         | 1          | 14         | 1          | 7          | 92           | 93           | 77           | 93           | 87         | -                   | 475          | -            | 353          | 371          |
| Church of the Korean Martyrs | Saddle Brook    | 9          | 1          | 1          | 1          | 1          | 5            | 6            | 7            | 6            | 7          | -                   | 279          | 67           | 82           | 111          |
| St. Philip the Apostle       | Saddle Brook    | 5          | 4          | 6          | 4          | 7          | 65           | 81           | 65           | 44           | 49         | -                   | 195          | 188          | 185          | 200          |
| Most Sacred Heart            | Wallington      | 16         | 7          | 9          | 7          | 4          | 82           | 40           | 62           | 40           | 47         | 282                 | 257          | 213          | 200          | 190          |
| Assumption                   | Wood-ridge      | 8          | 8          | 3          | 11         | 6          | 56           | 52           | 47           | 46           | 40         | 210                 | 271          | 247          | 240          | 256          |
| <b>Total Planning Area</b>   |                 | <b>258</b> | <b>143</b> | <b>143</b> | <b>118</b> | <b>114</b> | <b>1,352</b> | <b>1,120</b> | <b>1,243</b> | <b>1,002</b> | <b>949</b> | <b>1,537</b>        | <b>3,372</b> | <b>2,108</b> | <b>3,279</b> | <b>3,536</b> |

# Planning Area Ordinary Revenue



- Offertory has declined 8% over the past 10 years, but total Ordinary Revenue has increased by 4%. The increase in other ordinary income is in 2 parishes and not broad based. Excluding those two parishes Ordinary revenue follows the trend of offertory.
- Three parishes have seen offertory increases over 10% in the past 10 years.
- Five parishes have seen offertory decreases greater than 20% over the past 10 years.

# Planning Area Elementary Schools

| Parish              | St. Leo Parish   |     |     |
|---------------------|------------------|-----|-----|
| School              | SAINT LEO SCHOOL |     |     |
| Town                | ELMWOOD PK       |     |     |
| Enrollment Capacity | 420              |     |     |
|                     | Pre-K            | K-8 | 8   |
| Oct. 2015           | 38               | 193 | 231 |
| Oct. 2020           | 36               | 218 | 254 |
| Oct. 2021           | 53               | 211 | 264 |
| Oct. 2022           | 35               | 193 | 228 |
| Oct. 2023           | 32               | 202 | 234 |
| Oct. 2024           | 27               | 181 | 208 |

| Parish              | Corpus Christi Parish |     |     |
|---------------------|-----------------------|-----|-----|
| School              | CORPUS CHRISTI SCHOOL |     |     |
| Town                | HASBROUCK HEIGHTS     |     |     |
| Enrollment Capacity | 480                   |     |     |
|                     | Pre-K                 | K-8 | 8   |
| Oct. 2015           | 99                    | 325 | 424 |
| Oct. 2020           | 47                    | 281 | 328 |
| Oct. 2021           | 87                    | 293 | 380 |
| Oct. 2022           | 115                   | 272 | 387 |
| Oct. 2023           | 116                   | 289 | 405 |
| Oct. 2024           | 116                   | 296 | 412 |

| Parish              | Sacred Heart Parish |     |     |
|---------------------|---------------------|-----|-----|
| School              | SACRED HEART SCHOOL |     |     |
| Town                | LYNDHURST           |     |     |
| Enrollment Capacity | 728                 |     |     |
|                     | Pre-K               | K-8 | 8   |
| Oct. 2015           | 84                  | 334 | 418 |
| Oct. 2020           | 44                  | 288 | 332 |
| Oct. 2021           | 81                  | 317 | 398 |
| Oct. 2022           | 73                  | 292 | 365 |
| Oct. 2023           | 78                  | 325 | 403 |
| Oct. 2024           | 72                  | 331 | 403 |

| Parish              | Queen of Peace Parish |     |     |
|---------------------|-----------------------|-----|-----|
| School              | QUEEN OF PEACE SCHOOL |     |     |
| Town                | NORTH ARLINGTON       |     |     |
| Enrollment Capacity | 588                   |     |     |
|                     | Pre-K                 | K-8 | 8   |
| Oct. 2015           | 43                    | 245 | 288 |
| Oct. 2020           | 26                    | 138 | 164 |
| Oct. 2021           | 42                    | 146 | 188 |
| Oct. 2022           | 42                    | 146 | 188 |
| Oct. 2023           | 34                    | 131 | 165 |
| Oct. 2024           | 49                    | 133 | 182 |



St. Joseph Parish,  
East Rutherford, NJ

# About Our Parish



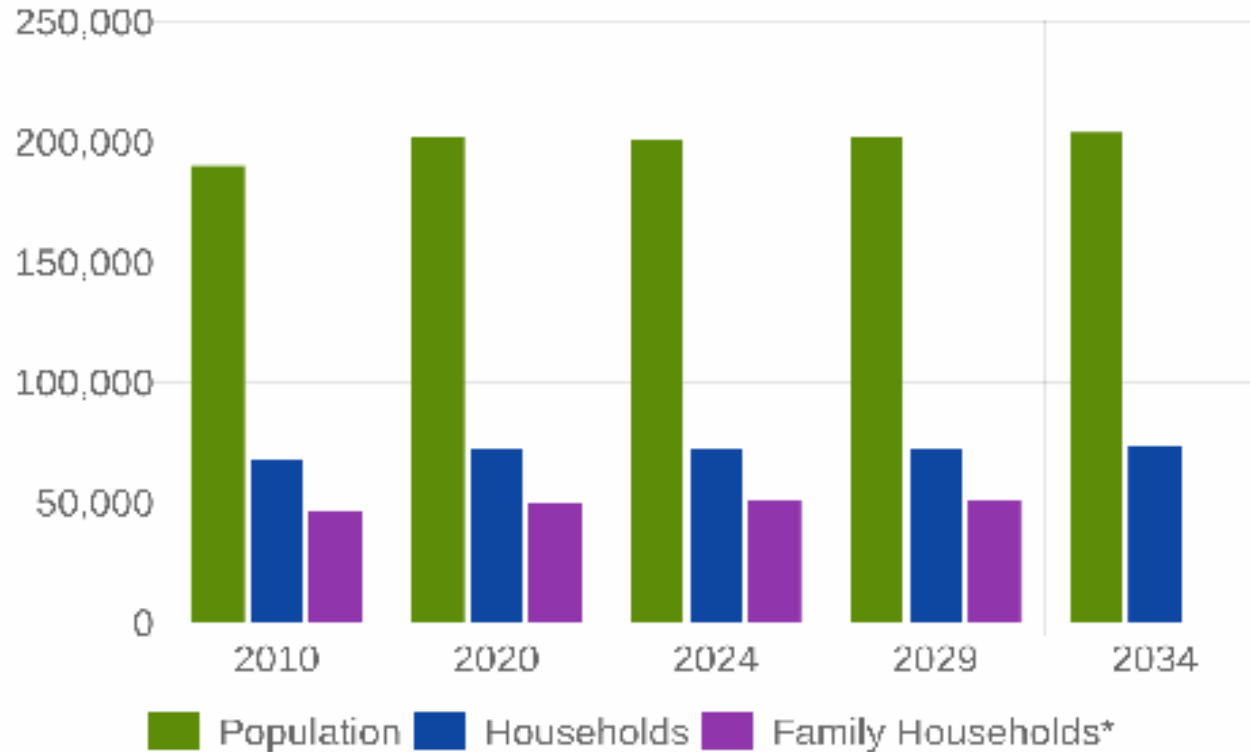
- The parish was established in 1872, and is located in East Rutherford, NJ.
- There are over 1500 registered families.
- The church has a seating capacity of 275. With 2024 Mass attendance of 763 and 5 Masses on a weekend, average Mass attendance as a percentage of capacity is 55%.

# Parish Demographics

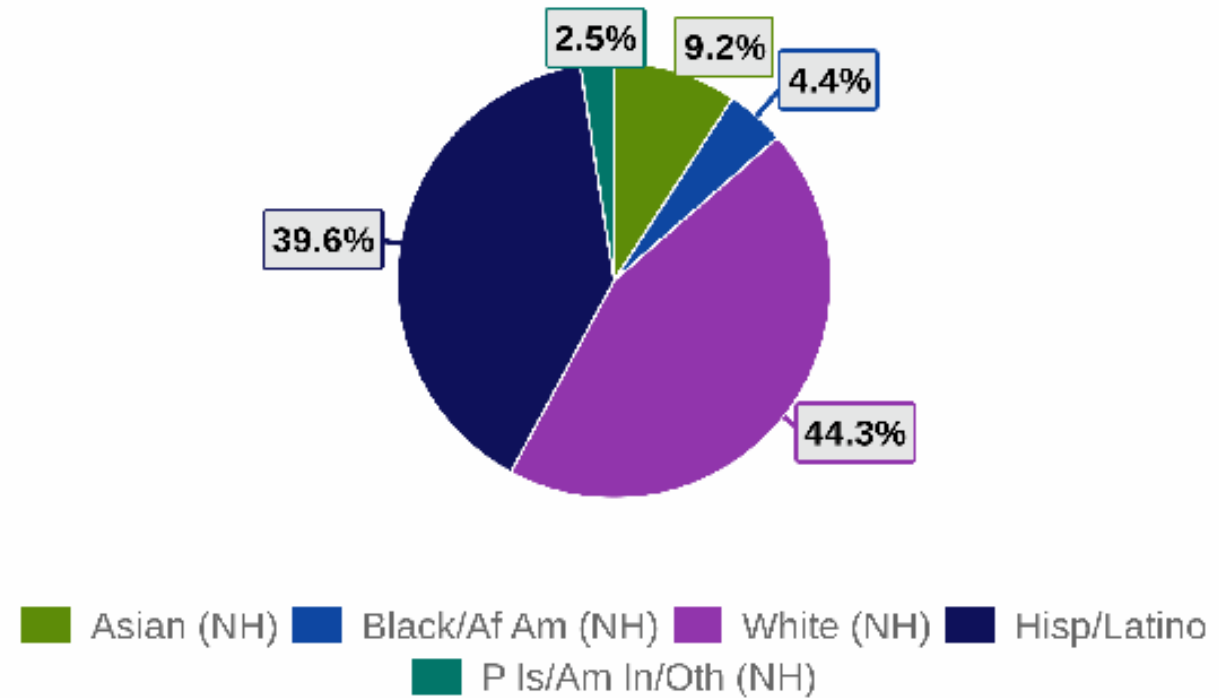
Data based on 3-mile radius from Church building



The general population of the area has increased 10,904 (5.73%) since 2010. It is projected to increase 2,756 (1.37%) over the next 10 years.



Ethnically, the area's largest population is White (NH) (44.3%), followed by Hisp/Latino (39.6%), and Asian (NH) (9.2%).

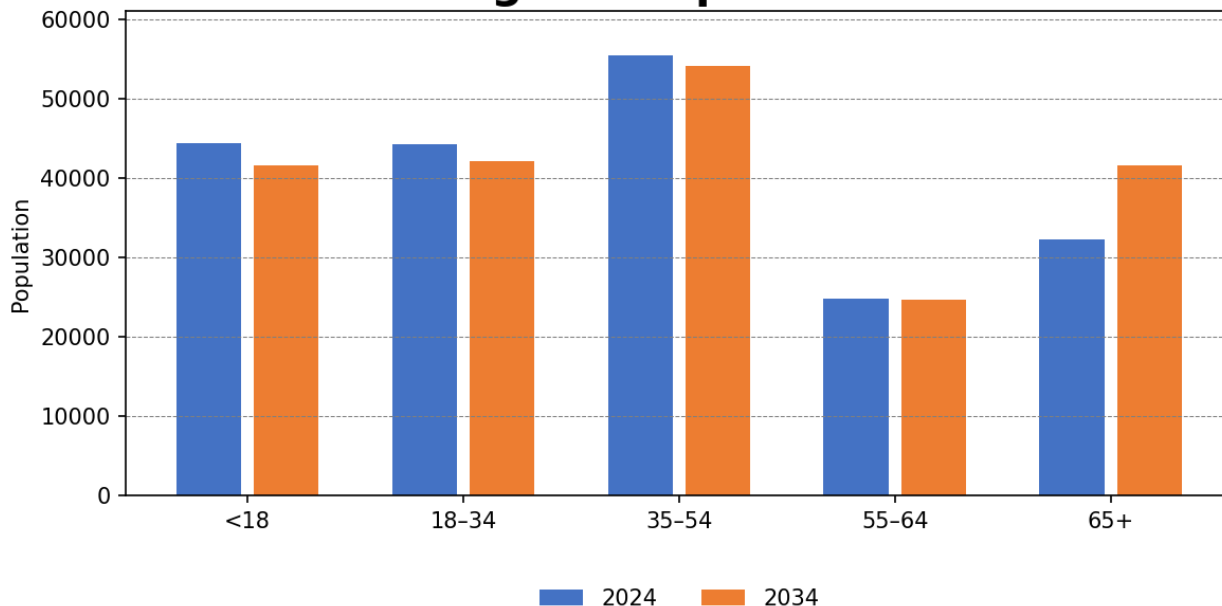


# Parish Demographics

Data based on 3-mile radius from Church building



### Age of Population

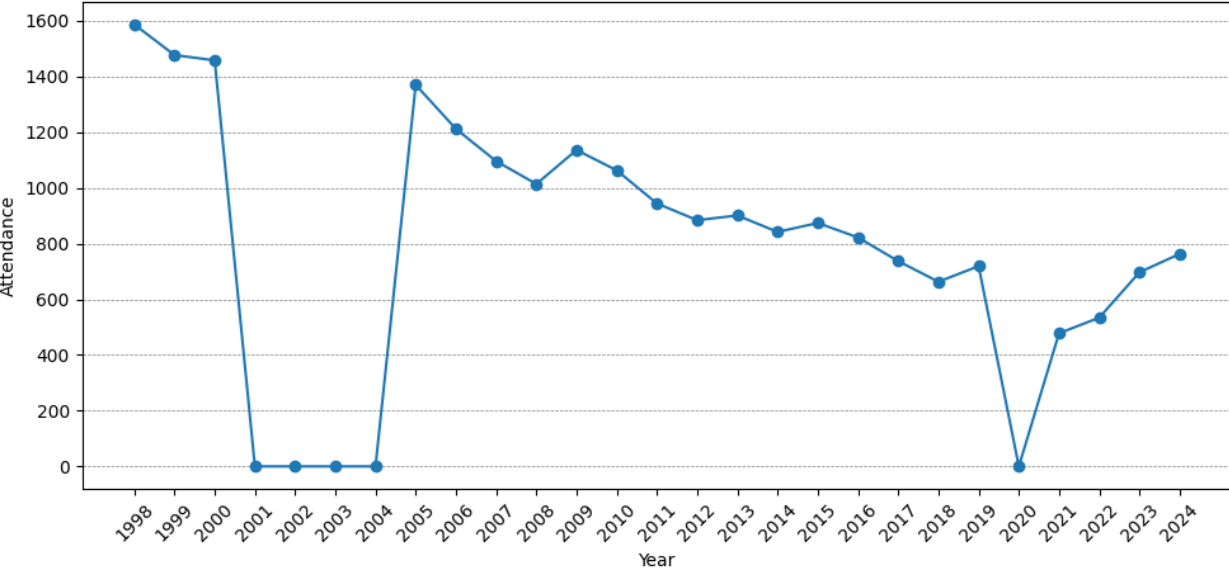


- The area’s population is projected to slightly age, with a 4.31% increase in the 65+ age group from 2024 to 2034. Simultaneously, there is a projected -0.96% decrease in the school-aged population (ages 5–17), indicating a decline in the number of children.
- The % of two-parent (married couple) households is projected to slightly decrease by 1.01%, from 68.7% in 2024 to 67.7% in 2029.
- The estimated current-year average household income is \$121,655. The average household income is projected to grow by 9.78% to \$133,556.
- In 2024, 34.7% of the population in the study area hold a bachelor’s or graduate degree, compared to 42.3% statewide. This suggests a less educated population, which may influence community engagement, expectations, and economic behavior.

# Parish Sacramental Trends



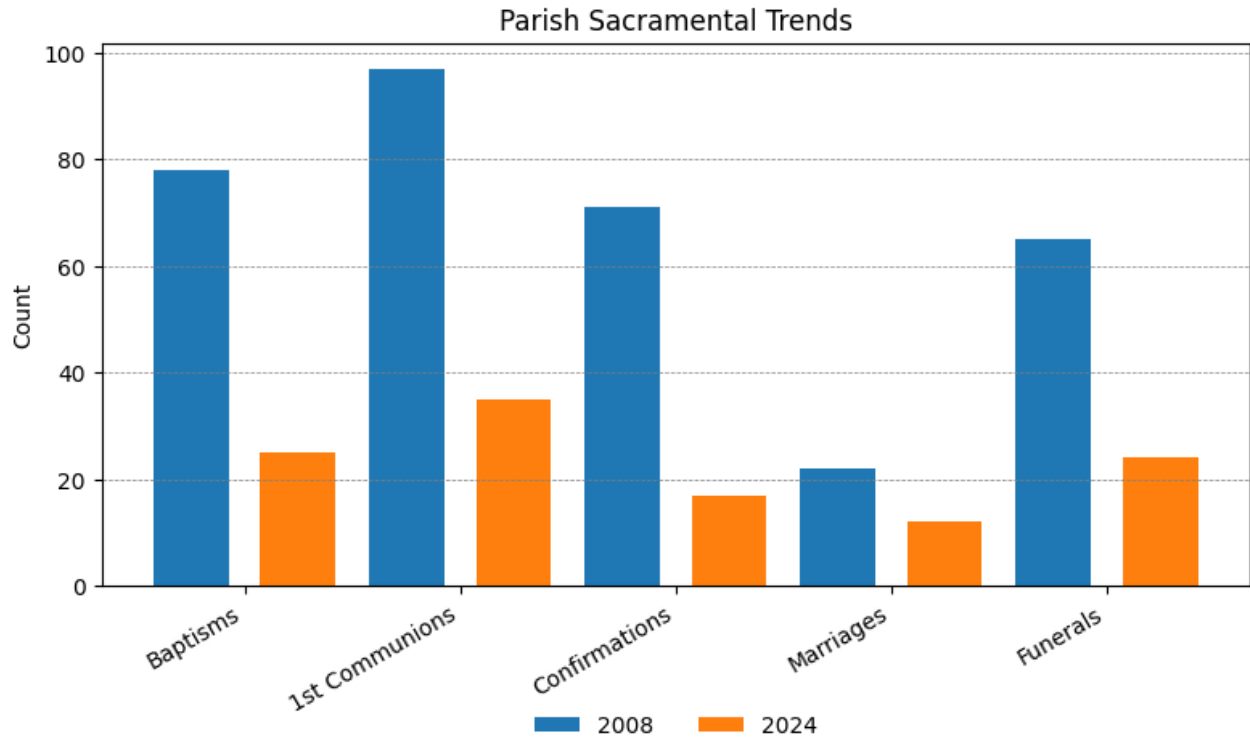
Mass Attendance per October Count



- Between 1998 and 2024, attendance decreased by 51%.
- From 2019 (Pre-COVID) to 2024, attendance increased an additional 6%.
- Data for your parish is shown in the planning area section of the workbook.

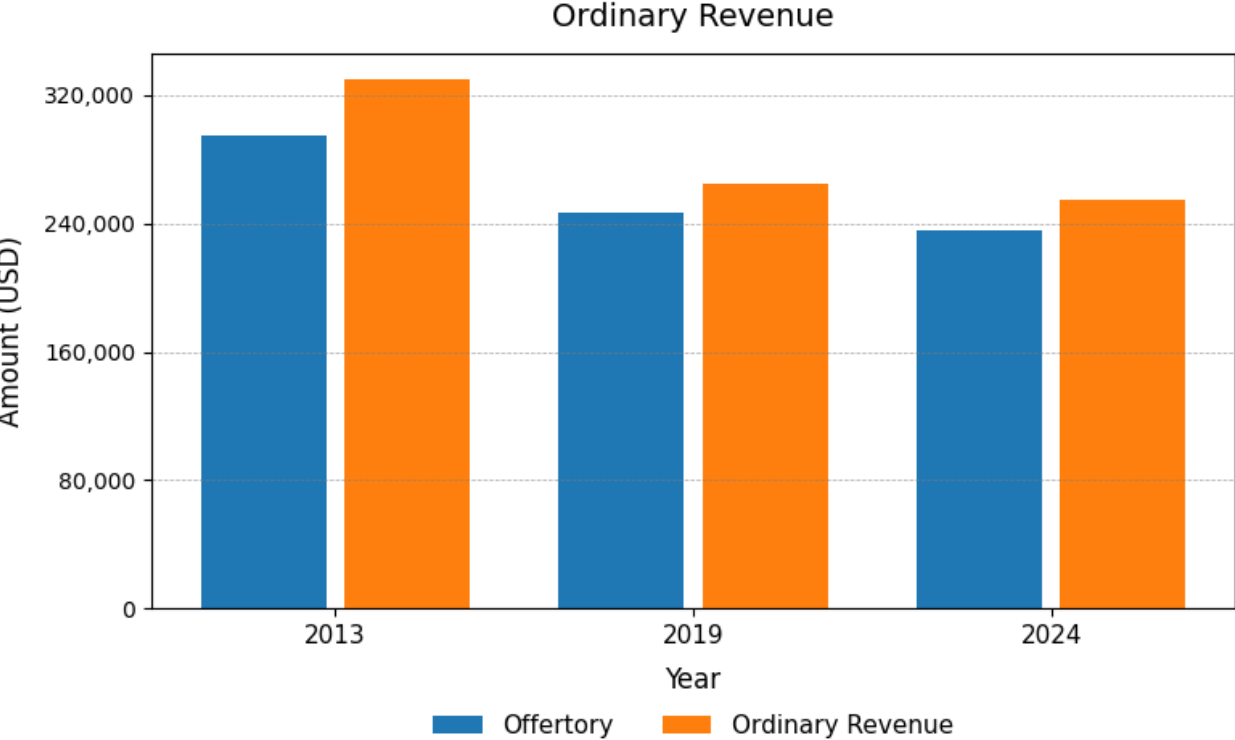
*Please Note: Zeros represent that no data was reported in those years.*

# Parish Sacramental Trends



- Baptisms decreased from 78 in 2008 to 25 in 2024 — a 68% decrease.
- 1st Communions fell from 97 in 2008 to 35 in 2024 — a 64% decrease.
- Confirmations decreased from 71 in 2008 to 17 in 2024 — a 76% decrease, while marriages declined from 22 in 2008 to 12 in 2024.
- Funerals decreased from 65 in 2008 to 24 in 2024 — a 63% decrease.

# Parish Sacramental Trends



- From 2013 to 2024, offertory collections decreased by 20% while Ordinary Revenue declined by 23%.
- From 2019 to 2024, offertory declined slightly (4%), from \$246,406 to \$236,084.
- Ordinary Revenue, fell by 4% over the same period (from \$264,251 to \$254,544).

# Financial Summary



## St. Joseph, East Rutherford

|                                   | 2022      | 2023      | 2024      |
|-----------------------------------|-----------|-----------|-----------|
| <b>Total Ordinary Revenue</b>     | 252,997   | 544,010   | 254,544   |
| <b>Additional Revenue</b>         | 61,119    | 54,625    | 35,763    |
| <b>Non-Operating Revenue</b>      | 643,137   | 780,274   | 60,653    |
| <b>Total Revenue</b>              | 957,252   | 1,378,909 | 350,961   |
| <b>Total Expenses</b>             | 558,795   | 528,125   | 695,820   |
| <b>Change in Net Assets</b>       | 398,457   | 850,784   | (344,860) |
| <b>Net Capital Projects</b>       | (396,841) | (701,094) | 38,615    |
| <b>Total Change in Net Assets</b> | 1,617     | 149,690   | (306,245) |

- St. Joseph has experienced mixed financial results over the past 3 years, with losses increasing most recently.
- Ordinary Revenue has increased, making up about 26%–73% of total revenue annually.
- Total revenue decreased from \$957K (2022) to \$351K (2024).