



WE ARE HIS **WITNESSES**

- *Undertaking the Journey of Pastoral Conversion*
- *in the Archdiocese of Newark*

PARISH WORKBOOK

(Revised 09.2025)



ARCHDIOCESE
of NEWARK

**God of Mercy,
you call the Archdiocese of Newark to witness to our faith in Jesus Christ.
As we undertake the journey of pastoral conversion,
 endow us with your gifts of communion, courage and compassion.
Help us to fulfill the mission of Jesus and his Church
 through convincing outreach, vibrant parishes and effective ministries.
Raise up selfless and energetic leaders to serve the Church with fidelity and zeal.
May we, the Church of Newark in Bergen, Essex, Hudson, and Union Counties,
 be sustained and strengthened by your grace.
May we, the People of God, discern and follow the promptings of your Holy Spirit.
May we, your holy people, dedicate our lives as firm disciples of Jesus Christ –
 Son of God and Son of Mary – wherever we go.
We ask this and all our prayers through Christ our Lord.
Amen.**



An Invitation to Pastoral Conversion

When I look at the Church in northern New Jersey, I see a vibrant and diverse Catholic community...I also see an archdiocese, empowered by the Holy Spirit, that is not afraid to confront its challenges and that adapts and grows, embracing new opportunities as the world around us changes.

If you asked me today what my vision is for the Church in northern New Jersey, I would make my own Pope Francis' words from *Evangelii Gaudium* (#25):

“I hope that all communities will devote the necessary effort to advancing along the path of a pastoral and missionary conversion which cannot leave things as they presently are.”

– **Cardinal Joseph W. Tobin**

We Are His Witnesses: A Pastoral Letter to the Clergy, Religious, and Lay Faithful of the Archdiocese of Newark (2025), page 2



Why Do We Need “Pastoral Conversion?”

In North America, we have moved from a period of “**Christendom**” (*Christianity as the dominant cultural influence*) to a “**New Apostolic Age**” (*Christianity as merely one influence among others*).

What does this mean? Those who came to Church because it was the “conventional thing to do” aren’t any longer. Those with no religious conviction are keeping their distance. Those who come to Church because of ties to the past are not sustaining a discipleship needed to confront secular culture.

Responding to the “signs of the times” requires a renewed focus on evangelization and the Great Commission:

Go, therefore, and make disciples of all nations, baptizing them in the name of the Father, and of the Son, and of the Holy Spirit, teaching them to observe all that I have commanded you. (Matthew 28:19–20)





In order for the journey of the Word to continue, the Christian community must make a determined missionary decision ‘capable of transforming everything, so that the Church’s customs, ways of doing things, times and schedules, language and structures can be suitably channeled for the evangelization of today’s world rather than for her self-preservation.’

The Pastoral Conversion of the Parish Community in the Service of the Evangelizing Mission of the Church (2020) #5



What is “Pastoral Conversion?”

Pastoral Conversion is a call to parish communities to evangelize and reform.

1. Digital culture and increased mobility have interrupted the territorial assumptions that parishes are based on (#8). The current parish model no longer adequately corresponds to the many expectations of the faithful (#16).
2. Parishes must “exude that spiritual dynamic of evangelization” or “run the risk of becoming self-referential and fossilized” (#17).
3. Priests, deacons, consecrated men and women, and the laity have the obligation to “cooperate in building up the singular body of Christ” (#28). The work of the parish is the responsibility of “the whole community” and all the baptized are “protagonists of evangelization” (#39). Each member of the community should be “responsible and directly involved in caring for the needs of the Church” (#40).

Summarized points drawn from *“The Pastoral Conversion of the Parish Community in the Service of the Evangelizing Mission of the Church (2020)”*



What is “We Are His Witnesses”?

The “We Are His Witnesses” pastoral planning process seeks to support pastoral conversion in the parishes of the Archdiocese of Newark as a response to:

1. the needs and opportunities presented by the changing landscape of the Archdiocese,
2. the needs and opportunities discerned in the Synod on Synodality, Encuentro process, etc.,
3. the hopes and needs shared by clergy for a comprehensive vision and plan for the Archdiocese, and
4. the desire of Archdiocesan pastoral offices to support parishes in ongoing pastoral conversion and discipleship efforts.



Essential Questions To Guide Us

- 1. Where are we today?** What are the opportunities and challenges we face in the changing landscape of northern New Jersey? How can we more effectively embrace the concept of synodality as a way of being Church? How can we develop and sustain a bold missionary outreach here in northern New Jersey?
- 2. Where is God calling us to go?** What new opportunities is the Holy Spirit opening for us as we proclaim the joy of the Gospel in the diverse neighborhoods of Bergen, Essex, Hudson, and Union counties? How can we respond to the growing desire for life-long faith formation and spiritual renewal? How do we develop and sustain a deeper sense of co-responsibility and collaboration among leadership here in our archdiocese?
- 3. How will we get there together?** What changes do we need to make in our pastoral ministries, systems, and structures to meet the demands of pastoral conversion and missionary discipleship, both now and in the years ahead? How can we better use the regional structures to encourage collaboration among parishes and promote the concepts of subsidiarity and solidarity? How do we engage in pastoral planning that truly is grounded in our mission?



“We Are His Witnesses” Guiding Concepts

OUR PLANNING OUTCOMES

- 1. Prayer:** *We will engage all individual Catholics to prayerfully consider what it means to be “His witnesses,” how to respond to the call to conversion and discipleship, and how to better journey together.*
- 2. Plan:** *We will articulate a plan for comprehensive Catholic presence across the Archdiocese built upon synodality, subsidiarity, and solidarity; integrating evangelization and outreach, pastoral care, and long-term sustainability.*
- 3. Support:** *We will develop Archdiocesan resources, support, and accompaniment for priests, deacons, and lay leaders to assist in the local envisioning and implementation process.*

OUR ESSENTIAL QUESTIONS:

- Where are we today?
- Where is God calling us to go?
- How will we get there together?

OUR PROCESS HALLMARKS:

- Synodal discernment
- Pastoral conversion
- Missionary discipleship
- Collaboration and co-responsibility



Areas of Mission Focus

01.

Evangelization and Outreach

How will we share the Gospel with all people in our area?

- Catholic presence
- Outreach to youth, young adults, and families
- Discipleship formation
- Social outreach and engagement
- Welcome and hospitality

02.

Pastoral Care of the Faithful

How will we care for all Catholics in our parish communities?

- Vibrant liturgy
- Lifelong faith formation and Catholic education
- Well-formed pastoral ministers
- Ministry to youth, young adults, and families

03.

Long-Term Sustainability

How will we provide support for parishes into the future?

- Invested and engaged lay leaders
- Resources to support and sustain evangelization and pastoral care
- Resources to maintain physical structures and Catholic presence
- Supportive context for evangelization and growth



“We Are His Witnesses” Planning Timeline

PRAYER, DISCERNMENT, and PLANNING



ENVISIONING and IMPLEMENTATION



“We Are His Witnesses” Participants



- As Archbishop, Cardinal Tobin makes any and all decisions.
- His leadership is supported by the groups in orange.
- Groups in blue provide ongoing input and feedback.
- Groups in yellow support the various phases and tasks of the process.



About this Workbook

The workbook should be used as an *internal* resource to help pastors and other parish leaders reflect on the current strengths and opportunities for future growth of ministry and evangelization in each planning area. Workbook data was submitted by each parish to the Archdiocese. The was reviewed and corrected by parish leaders in the summer of 2025.

CONFIDENTIALITY STATEMENT:

The information being provided to you is shared in the context of your participation in the pastoral conversion plan of *We Are His Witnesses*. **It is intended solely for that purpose and is considered confidential.**

This material may not be shared—whether in hard copy, digital form, verbally or by any other means —with any other individual or entity without the express written permission of the Archdiocese.



Glossary of Terms

Archbishop An archbishop oversees the ministerial and administrative life of the archdiocese, which is made up of local communities (parishes) of the faithful.

Archdiocese The parishes that an archbishop shepherds. The Archdiocese of Newark comprises 212 parishes in four counties in northern New Jersey, Bergen, Essex, Hudson and Union, and serves approximately 1.3 million Catholics.

Areas of Mission Focus The three prioritized targets for pastoral planning discussions and decisions: 1. Evangelization and Outreach, 2. Pastoral Care of the Faithful, and 3. Long-Term Sustainability

Canon Law Canon law refers to the body of law that governs the internal life and operations of the church.

Church A worship site or sacred site dedicated for divine worship for the benefit of the faithful; “church” refers to a building, whereas “parish” refers to a community.

Deanery A grouping of parishes within the archdiocese organized by geography and led by a dean (usually a pastor appointed by the archbishop). Deaneries aim to promote pastoral care through collaborative efforts, providing support and resources to parishes within their boundaries. The Archdiocese of Newark includes 27 deaneries.

Disciple Maker Index (DMI) A survey tool used to assess parish strengths, opportunities, and areas of growth; it is used to help parishes identify strategies during the implementation phase.

Evangelization The proclamation of the Gospel message to invite others to the faith.

Key Parish Leader (KPL) Collaborating with the pastor, PPOC, and councils of the parish, KPLs serve as the primary ambassadors of the We Are His Witnesses planning initiative to their fellow parishioners as well as the primary ambassadors of the parish to the Archdiocesan Planning Commission; this is accomplished by providing discussion, feedback, and input during planning consultations.

Merged Two or more parishes that have been united in such a way that a new parish is established from them. The new, merged parish has one pastoral council, one finance council, one pastoral vision, one staff, and one set of finances.

Missionary Discipleship A continuous process of growing in faith, deepening one’s relationship with God, and striving to live according to the teachings of Jesus Christ that results in both personal transformation and outreach to actively share the Gospel with others.

Models One or more viable options for future parish relationships or structures that help meet the Areas of Mission Focus; used to generate discussion, feedback, and input from priests, parish leaders, and parishioners.

Parish A community of the faithful within the archdiocese whose pastoral care has been entrusted to a pastor; a community of people who worship together in a particular place (territory).

Parish Point of Contact (PPOC) Collaborating with the pastor, the PPOC serves as the main conduit of information and coordination of logistics for the We Are His Witnesses planning initiative to their parish community.



Glossary of Terms (cont.)

Parish Workbook A collection of information about the parish, including demographics, sacramental trends, finances, ministries, community profile, history, and more; used to assist discussions and discernment related to pastoral conversion.

Parochial Vicar Formally called an associate pastor. A priest who serves as a co-worker with the pastor and ministers to parishioners under the authority of the pastor.

Pastor A priest entrusted with the pastoral care and leadership under the authority of the archbishop; responsible for administering the sacraments, instructing the congregation in the doctrine of the Church, and providing other ministerial services to the people of the parish.

Pastoral Care Refers to the caring work of the Church; the comprehensive support offered to individuals, especially those in need; it includes spiritual and religious needs, accompaniment, sacramental support, and support that addresses specific needs, such as those of youth, married couples, migrants, the sick, etc.

Pastoral Conversion The call to parishes to renew and transform structures and practices for the evangelization of today's world

Pastoral Planning A process of discernment to understand the local church's mission, respond to changing times, and foster a vibrant faith community.

Pastorate One or more parishes entrusted to the pastoral care of a pastor

Planning Area A geographic region within the Archdiocese; established only to help present and discuss possible parish models.

Relegation A church building that will no longer be used for worship and will transfer ownership or be sold by a parish. The process is governed by canon law and requires a decree from the archbishop.

Solidarity The affirmation that all people are God's children, connected as sisters and brothers; it emphasizes our interdependence, where we need each other to live in peace and harmony. It is key to living God's love by helping others and creating a united, compassionate world.

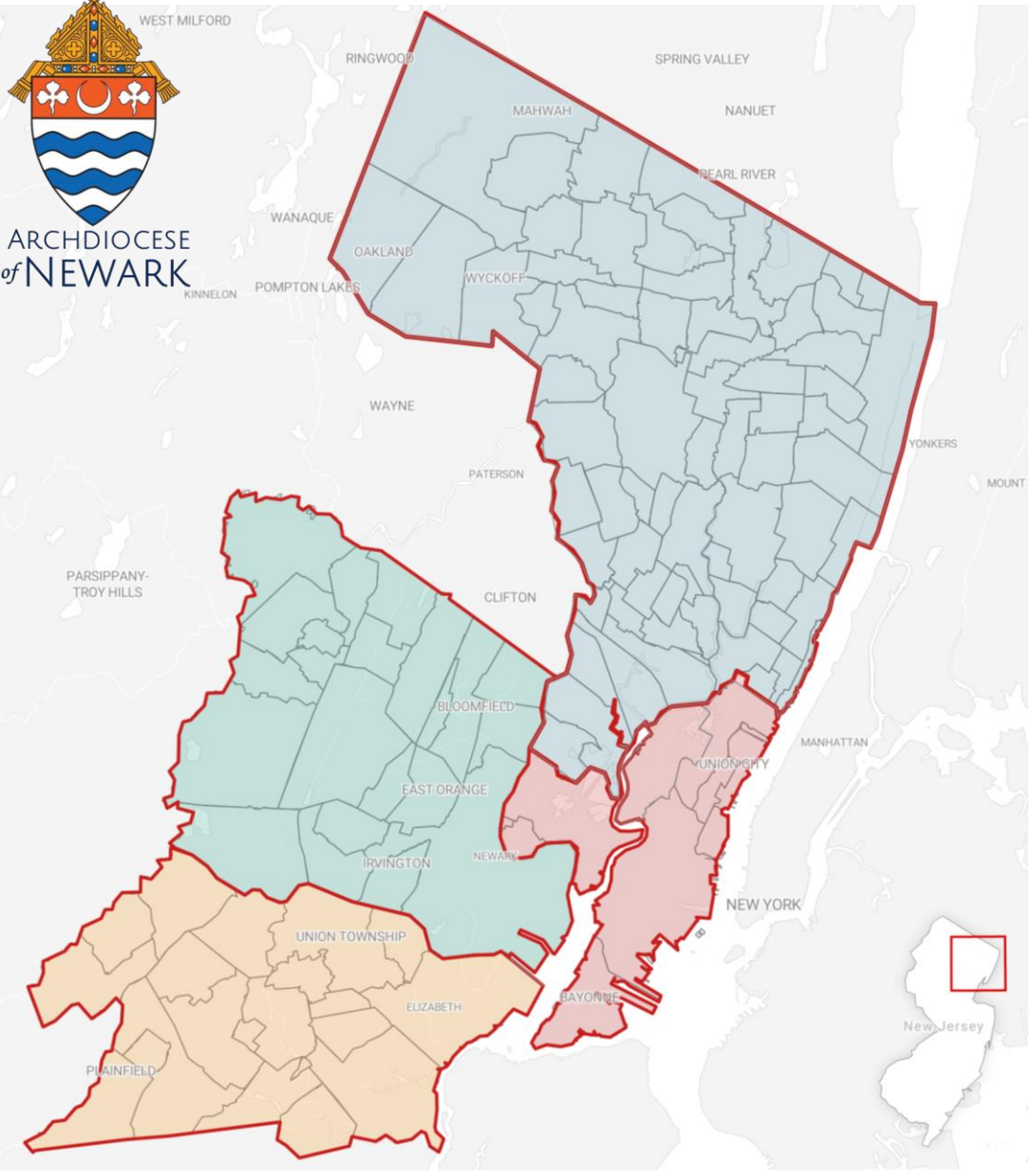
Subsidiarity The principle that decisions should be made at the most local level possible, ensuring everyone has a voice and can contribute; it empowers individuals and communities to participate in decisions that affect them.

Synodality The act of engaging in authentic dialogue within and beyond the Church, fostering a united, inclusive, and missionary community.





ARCHDIOCESE
of NEWARK



Territory for Evangelization

- The Archdiocese of Newark encompasses the territory of four counties in northern New Jersey: Bergen, Essex, Hudson, and Union.
- The general population of this region is approximately 3.1 million people.
- There are currently 212 canonical parishes within the boundaries of the Archdiocese.
- The Catholic population of this region is approximately 1.37 million people.
- The Catholic population comprises approximately 44% of the general population.



Our Current Reality

1. The general population of the four counties in the Archdiocese is projected to grow, along with opportunities for evangelization. **[see page #18]**
2. While Mass attendance and the number of individuals receiving Sacraments are rebounding since the COVID-19 pandemic, the overall trend is still down (below 2019 levels). **[see pages #19-20]**
3. Parishes are decreasing in size, based on participation and Mass attendance. **[see page #21]**
4. Given current age distribution and ordination trends, the number of priests available to serve as parish pastors will decrease significantly over the next 20 years. **[see pages #22-23]**



General Population Trend and Forecast



- The total population and number of households within the territory of the Archdiocese is expected to grow by 3% or more.
- This growth is expected in each of the four counties.
- This is increase in general population, meaning an increase in both the Catholic and non-Catholic population.

Mass Attendance by County



	Since 2019	Since 2013	Since 1998
Bergen	-15%	-24%	-45%
Essex	-17%	-28%	-42%
Hudson	-26%	-27%	-47%
Union	-15%	-19%	-40%
RCAN*	-18%	-24%	-44%

* NOTE: "RCAN" stands for the "Roman Catholic Archdiocese of Newark"

Data is self-reported annually by each parish.

Sacramental Trends



	Since 2019	Since 2013	Since 2008
Baptisms	-12%	-24%	-35%
First Communions	-14%	-18%	-32%
Confirmations	-14%	-13%	-26%
Marriages	-22%	-25%	-50%
Funerals	-20%	-24%	-36%

Data is self-reported annually by each parish.



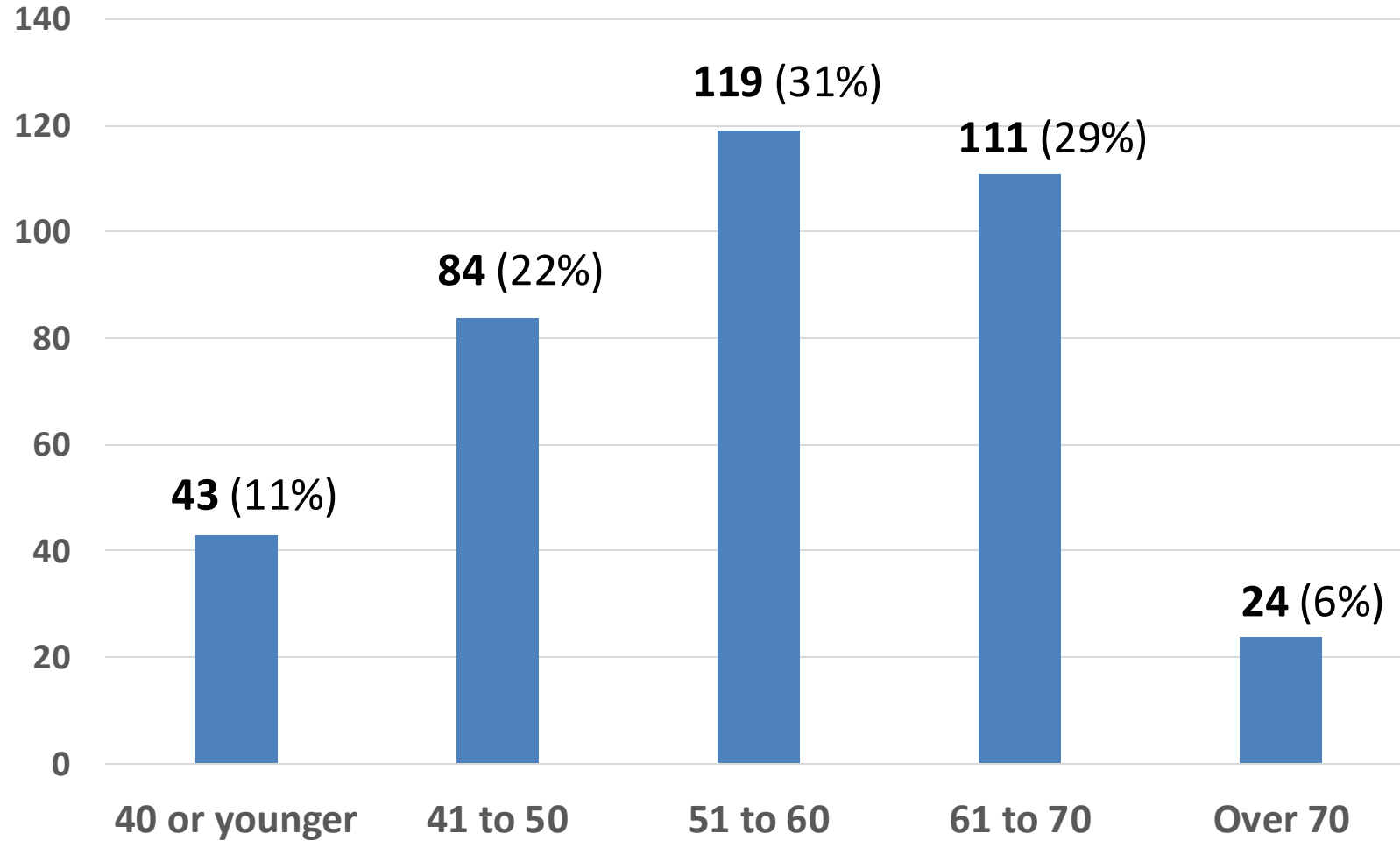
Number of Parishes By Mass Attendance

of Parishes



- Average Mass attendance per parish was 936 in 2013. It fell to 707 in 2024, a 24% decrease.
- 4 parish had an average attendance of under 200 people in 2013. This rose to 12 parishes in 2024.
- 12 parishes had more than 2,000 attendees per weekend in 2013. This fell to only 7 parishes in 2024.

Active RCAN Priests by Age Group



- There were 381 priests of the Archdiocese of Newark in active ministry in 2024.
- In 20 years, the priests currently aged 50 and over will be retired from active ministry.
- 254 of all active priests were over the age of 50 (66% of the total).
- 127 of all active priests were under the age of 50 (34% of the total).

Projected Number of RCAN Priests



- The projection models the number of priests given an average of 1 to 4 ordinations per year.
- The projection assumes a usual retirement age of 70 with some priests remaining until 75.
- The number of priests available to serve as pastor in 2024 was 205. This is expected to decrease to between 104 and 131 by 2044, depending on the number of ordinations.



OUR PLANNING AREA

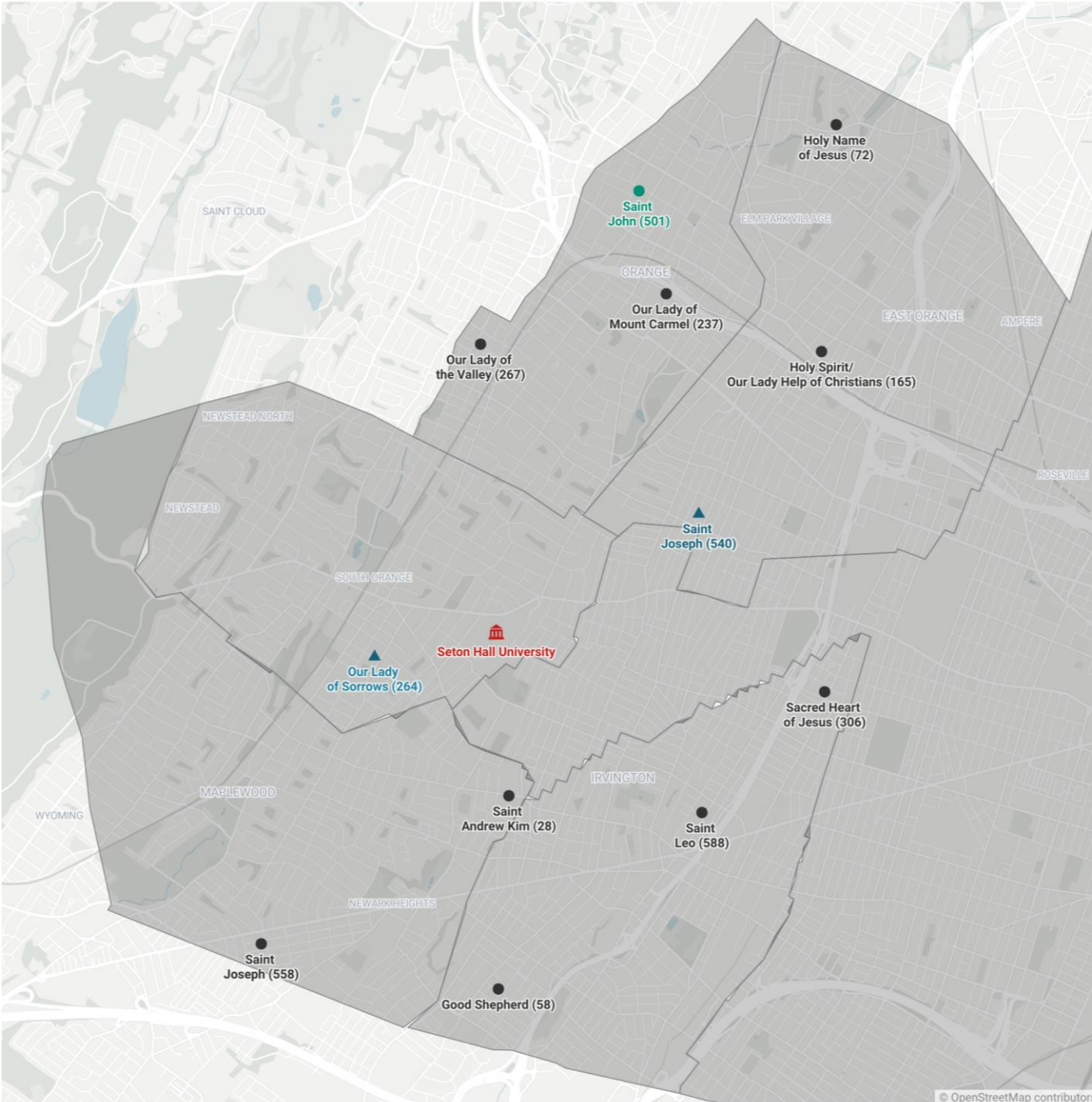
Southwest Essex County



Southwest Essex

About our planning area:

- The planning area is the southeastern area of Essex county as shown in the map on the prior page.
- The planning area includes 12 parishes, 2 elementary schools and no high schools.
- There are currently 19 priests assigned to the planning area.
- Parishes are generally within 3 mile of a nearby parish.



Planning Area Population Trends

	2000	2010	2020	Estimated	Change in %		
Area Name	Census	Census	Census	2023	23 vs 20	23 vs 10	23 vs 00
City of Orange township	32,868	30,134	34,447	33,787	-1.9%	12.1%	2.8%
East Orange city	69,824	64,270	69,612	69,556	-0.1%	8.2%	-0.4%
Irvington township	60,695	53,926	61,176	59,925	-2.0%	11.1%	-1.3%
Maplewood township	23,868	23,867	25,684	25,321	-1.4%	6.1%	6.1%
South Orange Village township	16,964	16,198	18,484	18,208	-1.5%	12.4%	7.3%
Total Planning Area	204,219	188,395	209,403	206,797	-1.2%	9.8%	1.3%

- The planning area has grown 1% since 2000, with a decline from 2000 to 2010 and growth coming from 2010 to 2020. Since 2020 the population has declined slightly.
- Largest municipalities are East Orange and Irvington.

Source: United States Census

Planning Area Demographics

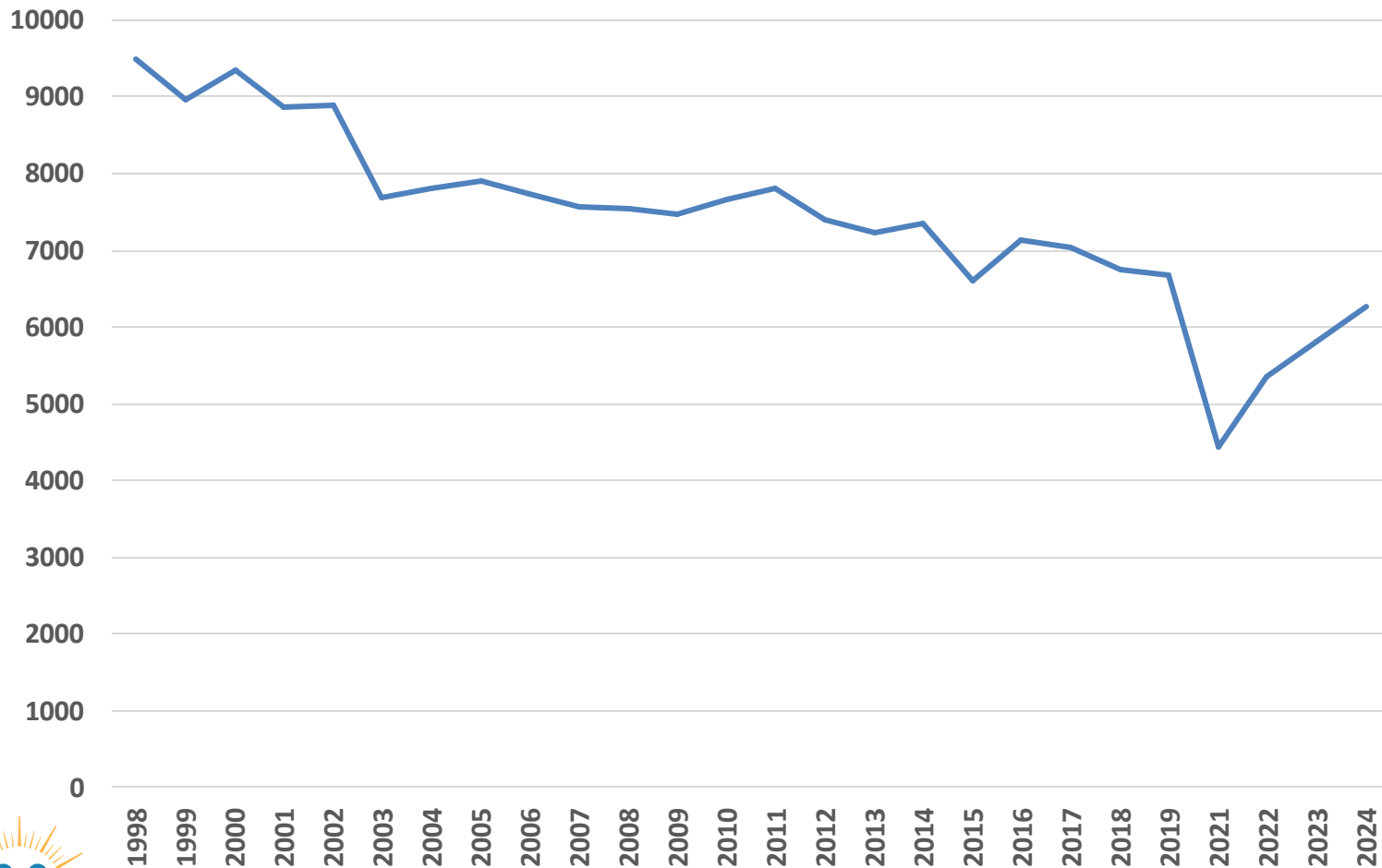
Planining Area Demographics	Population	Ethnic Composition					(\$ 000) Median HH Inc
		White	Hispanic	Black	Asian	Other	
City of Orange township	33,787	7.6%	12.5%	74.0%	1.3%	4.6%	64.0
East Orange city	69,556	1.9%	10.1%	77.8%	2.5%	7.7%	56.3
Irvington township	59,925	5.7%	8.4%	80.5%	1.1%	4.3%	65.5
Maplewood township	25,321	56.1%	5.2%	32.0%	2.8%	3.9%	142.6
South Orange Village township	18,208	58.2%	4.9%	30.4%	3.9%	2.6%	149.7

- The planning area has two distinct populations. Maplewood and South Orange are more affluent and are predominantly White. Just under 1/3 of the population in these communities is Black.
- Orange, East Orange and Irvington are predominantly Black with a lower median household income.

Source: United States Census

Planning Area Mass Attendance Trend

Mass Attendance (October count)



- Mass Attendance has declined 36% since 1998, less than the average archdiocesan decline of 43%
- Between 1998 and 2019 attendance declined 30%
- From 2019 (Pre-COVID) to 2024 attendance declined an additional 10%

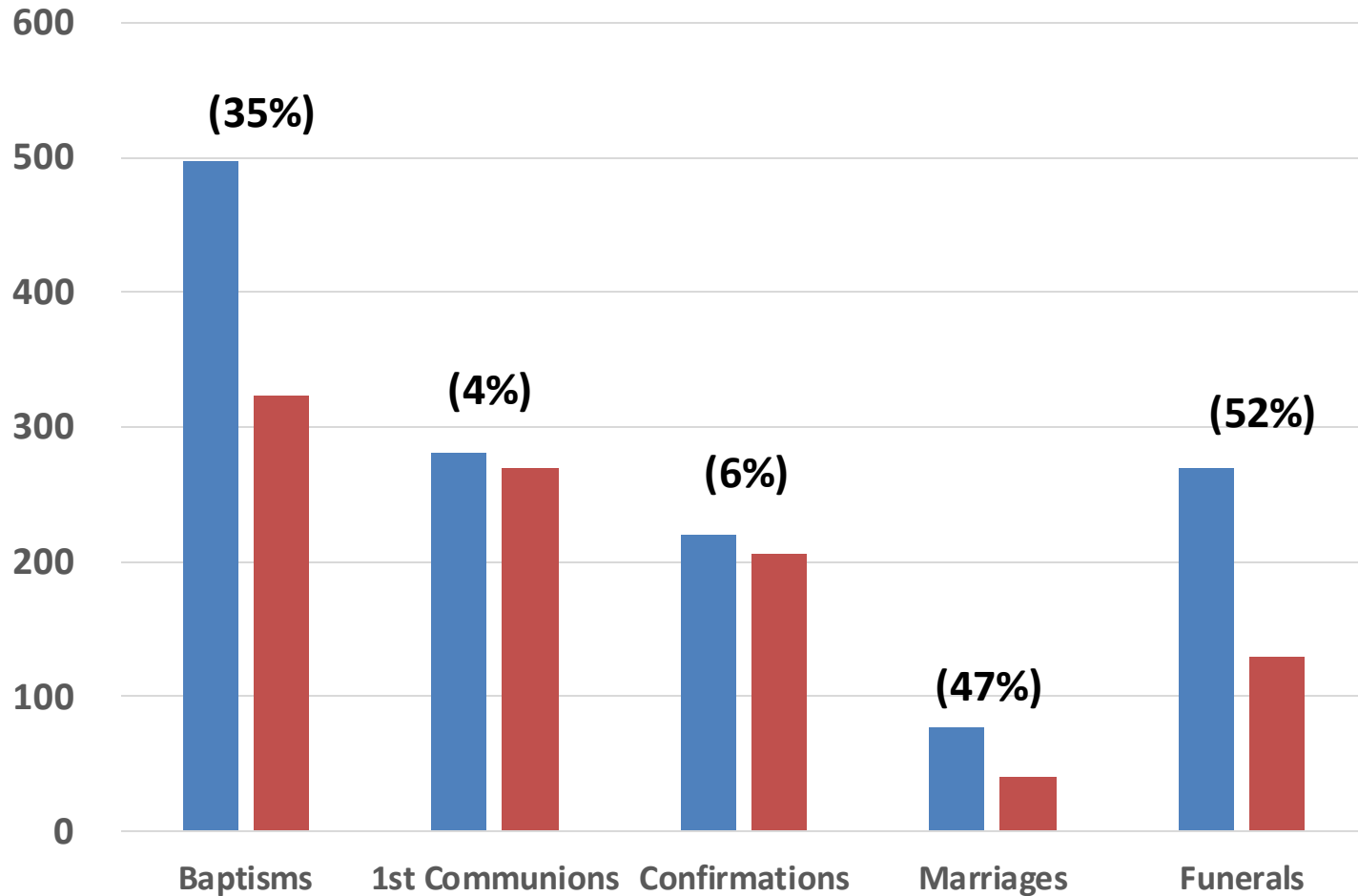
NOTE: No Mass attendance count was taken in 2020.

Planning Area Mass Attendance Trend

PARISH NAME	TOWN	1998	2009	2019	2022	2023	2024	2019 vs 1998	2024 vs 2019	2024 vs 1998	# of Masses	Seating Capacity	% Capacity Utilized
Holy Name of Jesus	E. Orange	469	203	174	93	135	128	-63%	-26%	-73%	3	600	7%
Holy Spirit/O.L.Help of Christians	E. Orange	591	690	557	439	511	543	-6%	-3%	-8%	3	n/a	n/a
St. Joseph	E. Orange	306	136	436	295	331	349	42%	-20%	14%	4	400	22%
Sacred Heart of Jesus	Irvington	622	590	525	480	484	481	-16%	-8%	-23%	4	300	40%
Good Shepherd (incl IMM Ht of Mary)	Irvington	1,323	538	447	297	269	196	-66%	-56%	-85%	3	450	15%
St. Leo	Irvington	581	575	433	365	393	n/a	-25%	n/a	n/a	4	600	n/a
Saint Andrew Kim	Maplewood	737	626	404	163	163	320	-45%	-21%	-57%	1	550	58%
St. Joseph	Maplewood	787	874	834	601	601	781	6%	-6%	-1%	3	900	29%
Our Lady of Mt. Carmel	Orange	698	496	653	741	798	857	-6%	31%	23%	5	500	34%
Our Lady of the Valley	Orange	497	515	448	430	441	588	-10%	31%	18%	5	700	17%
St. John	Orange	1,298	933	856	777	925	1,029	-34%	20%	-21%	5	700	29%
Our Lady of Sorrows	South Orange	1,577	1,289	900	659	747	759	-43%	-16%	-52%	4	600	32%
Total Planning Area		9,486	7,465	6,667	5,340	5,798	6,031	-30%	-10%	-36%	44		

- Three parishes have experienced attendance increases
- Three parishes have experienced a significant attendance decline of more than 50%.
- Percent of church capacity utilized given 2024 attendance and the number of Masses celebrated varies but is 40% or less with one exception..

Planning Area Mass Sacramental Trends



- Sacramental trends for Baptisms, Marriages and Funerals are declining in line with Archdiocesan averages. First Communion and Confirmation have been relatively stable.
- Baptisms exceed Funerals by 2.5 to 1, much higher than the Archdiocesan average of 1.5 Baptisms to 1 Funeral.
- There are 1,406 children in religious education in the planning area in the 2023-24 school year.
- Total registered parishioners are approximately 17,411 and there are approximately 7,617 registered families in 2024.

■ 2008 ■ 2024

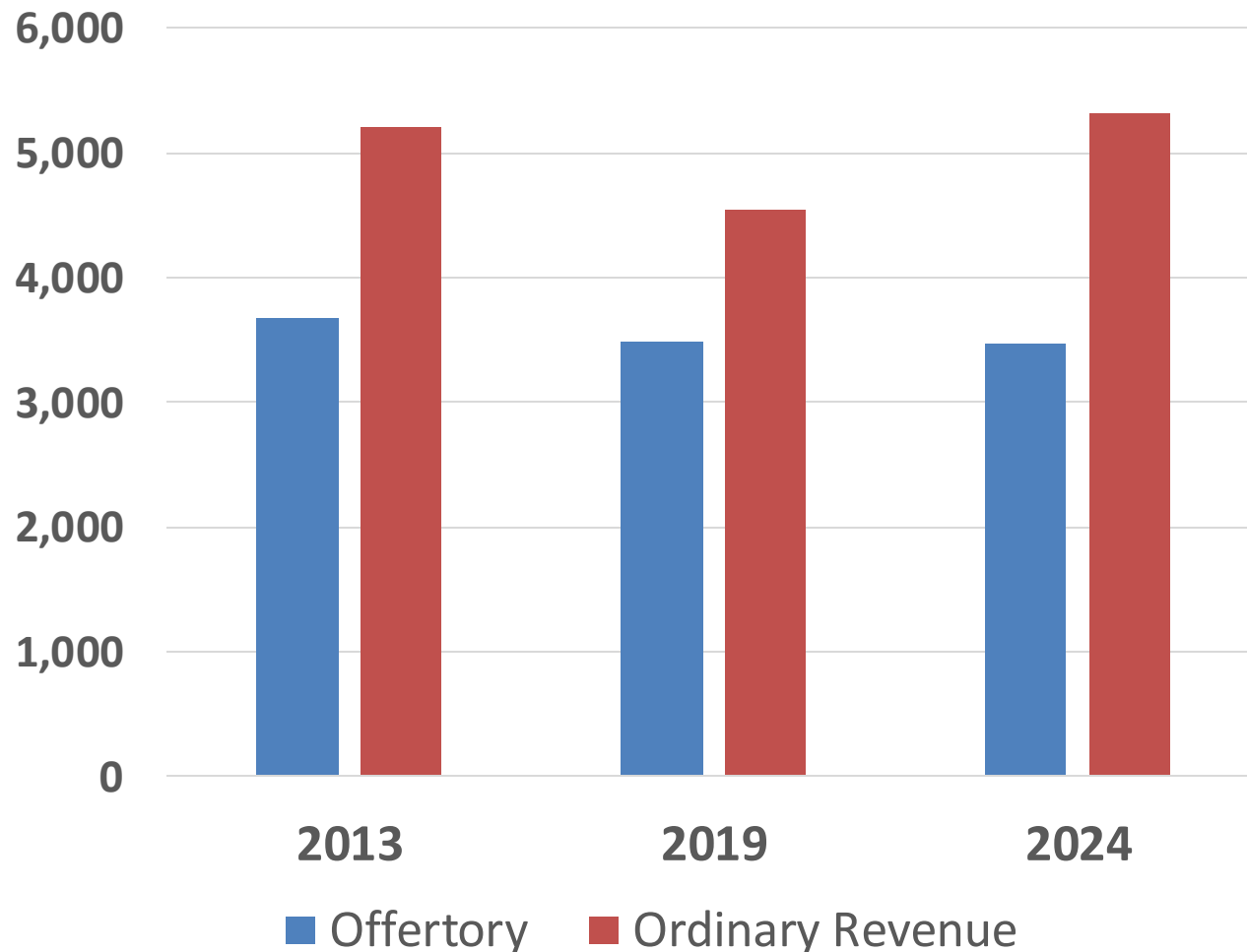
Planning Area Mass Sacramental Trends

PARISH NAME	TOWN	BAPTISMS					FIRST COMMUNIONS					CONFIRMATIONS				
		2008	2013	2019	2023	2024	2008	2013	2019	2023	2024	2008	2013	2019	2023	2024
Holy Name of Jesus	E. Orange	16	14	10	8	11	8	7	6	3	3	7	2	4	7	5
Holy Spirit/O.L.Help of Christians	E. Orange	61	65	40	53	52	17	12	17	11	7	15	8	7	9	7
St. Joseph	E. Orange	1	24	18	18	24	7	8	23	16	25	1	15	9	11	9
Good Shepherd	Irvington	39	19	12	6	1	25	25	15	10	7	-	18	13	8	-
Sacred Heart of Jesus	Irvington	21	13	6	12	17	10	8	11	10	11	-	-	-	-	19
St. Leo	Irvington	16	11	23	-	-	31	13	25	-	-	18	6	9	-	-
Saint Andrew Kim	Maplewood	16	10	12	9	5	25	10	7	4	6	33	-	-	6	5
St. Joseph	Maplewood	50	45	63	-	55	30	30	24	-	18	15	23	17	-	22
Our Lady of Mt. Carmel	Orange	56	66	48	28	50	15	42	56	65	49	12	34	20	21	48
Our Lady of the Valley	Orange	39	28	31	33	26	10	30	37	31	52	25	22	17	28	32
St. John	Orange	64	52	36	43	41	44	66	49	40	41	34	17	29	30	30
Our Lady of Sorrows	South Orange	118	66	58	43	41	59	54	60	45	50	60	52	50	27	29
Total Planning Area		497	413	357	253	323	281	305	330	235	269	220	197	175	147	206

Planning Area Mass Sacramental Trends

PARISH NAME	TOWN	MARRIAGES					FUNERALS					RELIGIOUS EDUCATION				
		2008	2013	2019	2023	2024	2008	2013	2019	2023	2024	2019-2020	2020-2021	2021-2022	2022-2023	2023-2024
Holy Name of Jesus	E. Orange	3	-	2	2	3	17	8	8	14	7	26	20	17	22	23
Holy Spirit/O.L.Help of Christians	E. Orange	8	2	3	2	1	11	21	19	21	27	-	55	57	57	60
St. Joseph	E. Orange	-	3	2	1	-	5	12	4	2	4	-	60	72	72	82
Good Shepherd	Irvington	2	2	2	-	-	14	9	9	2	6	43	23	30	32	25
Sacred Heart of Jesus	Irvington	6	1	1	2	3	25	11	11	12	8	37	35	35	43	47
St. Leo	Irvington	3	1	-	-	-	9	14	14	-	-	-	65	88	92	88
Saint Andrew Kim	Maplewood	10	1	2	1	1	6	6	4	5	10	64	61	63	53	58
St. Joseph	Maplewood	11	2	3	-	7	37	23	31	-	19	-	-	-	-	110
Our Lady of Mt. Carmel	Orange	4	6	6	6	5	54	42	18	13	8	-	99	153	192	273
Our Lady of the Valley	Orange	3	4	4	2	3	22	16	12	9	6	-	-	152	165	177
St. John	Orange	3	11	14	7	4	17	11	7	2	8	-	38	189	57	165
Our Lady of Sorrows	South Orange	24	21	12	20	14	52	49	41	29	27	239	204	187	185	298
Total Planning Area		77	54	51	43	41	269	222	178	109	130	409	660	1,043	970	1,406

Planning Area Ordinary Revenue



- Offertory has declined 6% in the past 10 years. Total Ordinary Revenue has increased slightly after a decline from 2013 to 2019. However this increase is caused by 3 parishes and not broad based.
- Offertory as a % of Total Ordinary Revenues is 69% vs the Archdiocese average of 75%.
- There are differences among individual parishes.
 - Four parishes have seen offertory increases over the past 10 years. 3 of those parishes are in Orange.
 - Eight parishes have had an offertory decline over the past 10 years.

Planning Area Elementary Schools

Parish	St. Joseph Parish, East Orange		
School	SAINT JOSEPH SCHOOL		
Town	EAST ORANGE		
Enrollment Capacity	420		
	Pre-K	K-8	8
Oct. 2015	42	235	277
Oct. 2020	11	203	214
Oct. 2021	17	166	183
Oct. 2022	25	160	185
Oct. 2023	34	172	206
Oct. 2024	25	191	216

Parish	Our Lady of Sorrows Parish		
School	OUR LADY OF SORROWS SCHOOL		
Town	SOUTH ORANGE		
Enrollment Capacity	560		
	Pre-K	K-8	8
Oct. 2015	46	169	215
Oct. 2020	30	180	210
Oct. 2021	42	219	261
Oct. 2022	46	205	251
Oct. 2023	46	184	230
Oct. 2024	39	185	224



WE ARE HIS
WITNESSES

St. Leo Parish,
Irvington, NJ

About Our Parish



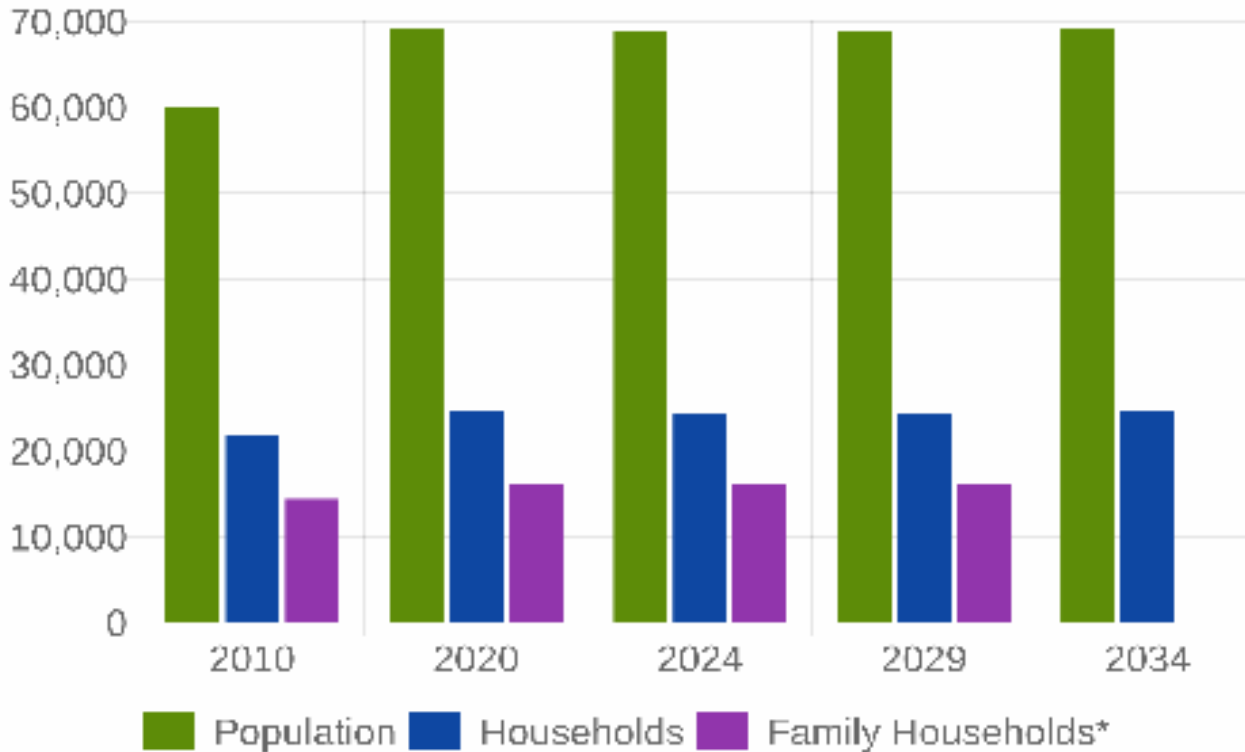
- The parish was established in 1878 and is located in Irvington, NJ.
- Registered family data was not provided.
- The church has a seating capacity of 600. With 2024 Mass attendance of 0 and 4 Masses on a weekend, average Mass attendance as a percentage of capacity is 0%.

Parish Demographics

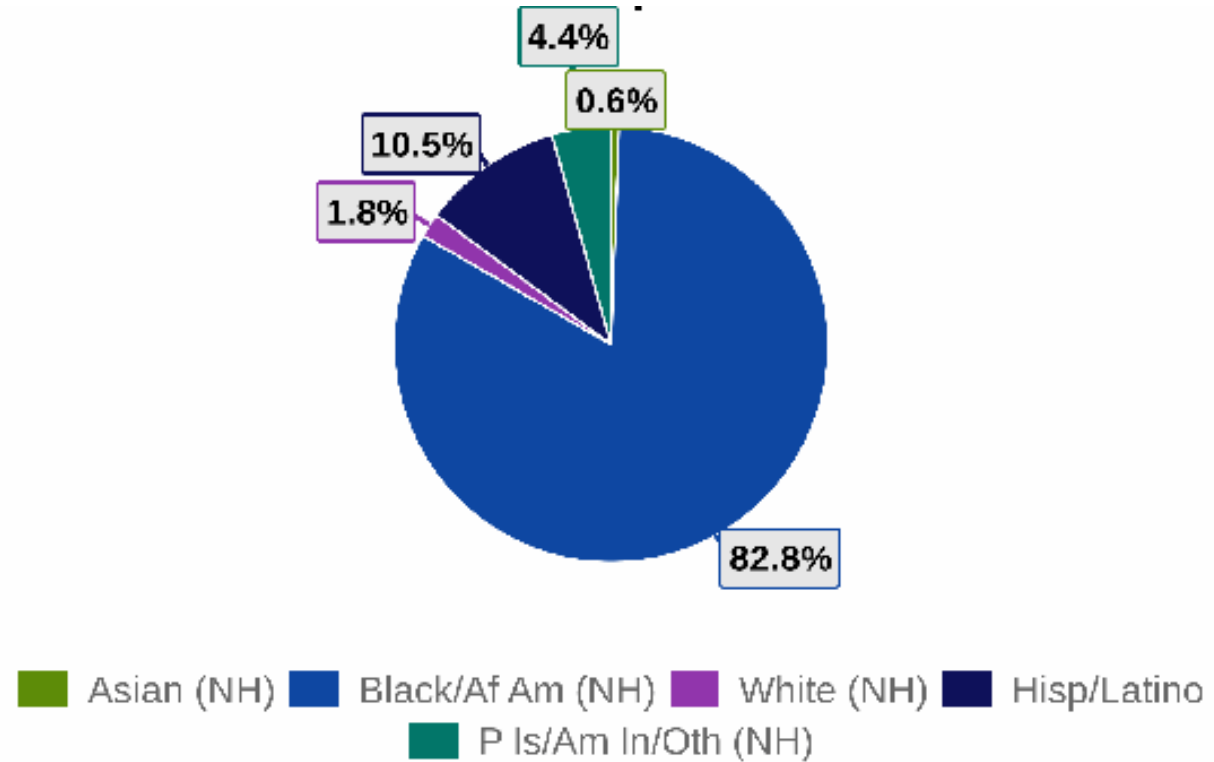
Data based on 1-mile radius from Church building



The general population of the area has increased 8,663 (14.42%) since 2010. It is projected to increase 446 (0.65%) over the next 10 years.



Ethnically, the area's largest population is Black/Af Am (NH) (82.8%), followed by Hisp/Latino (10.5%), and P Is/Am In/Oth (NH) (4.4%).

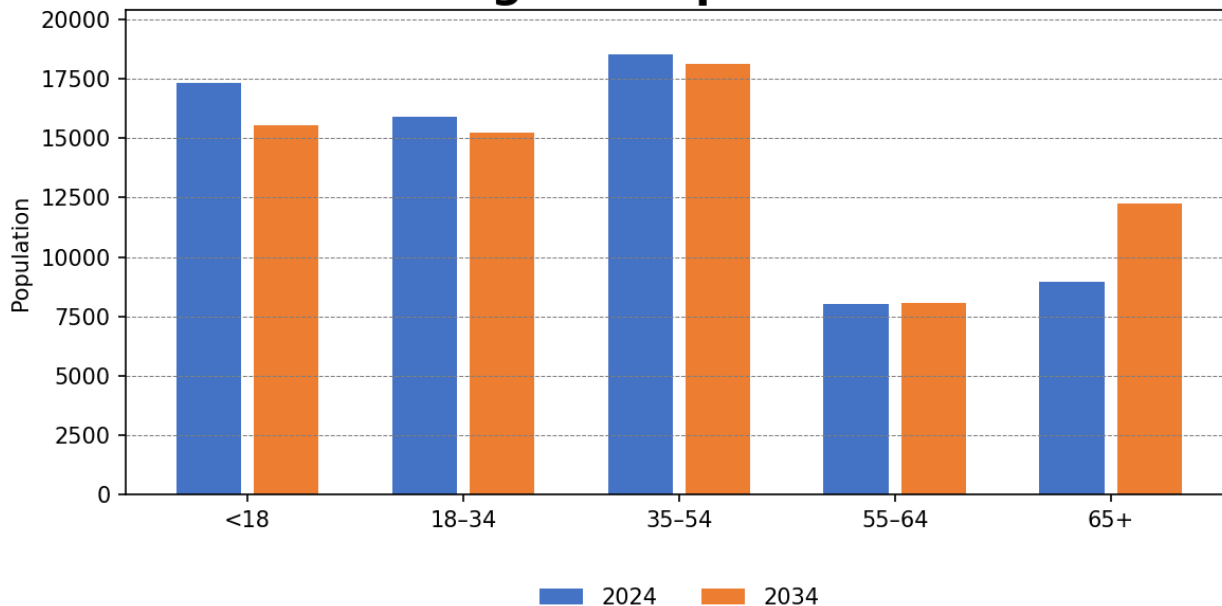


Parish Demographics

Data based on 1-mile radius from Church building



Age of Population

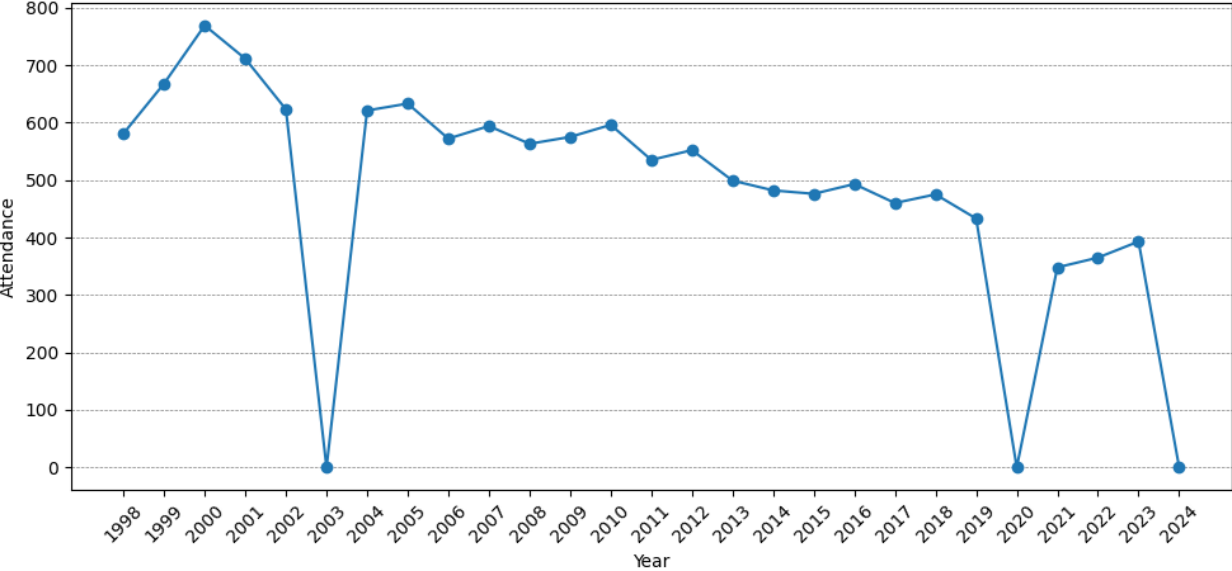


- The area’s population is projected to slightly age, with a 4.65% increase in the 65+ age group from 2024 to 2034. Simultaneously, there is a projected -1.86% decrease in the school-aged population (ages 5–17), indicating a decline in the number of children.
- The % of two-parent (married couple) households is projected to slightly increase by 0.01%, from 35.9% in 2024 to 35.9% in 2029.
- The estimated current-year average household income is \$74,371. The average household income is projected to grow by 11.81% to \$83,157.
- In 2024, 22.5% of the population in the study area hold a bachelor’s or graduate degree, compared to 42.3% statewide. This suggests a less educated population, which may influence community engagement, expectations, and economic behavior.

Parish Sacramental Trends



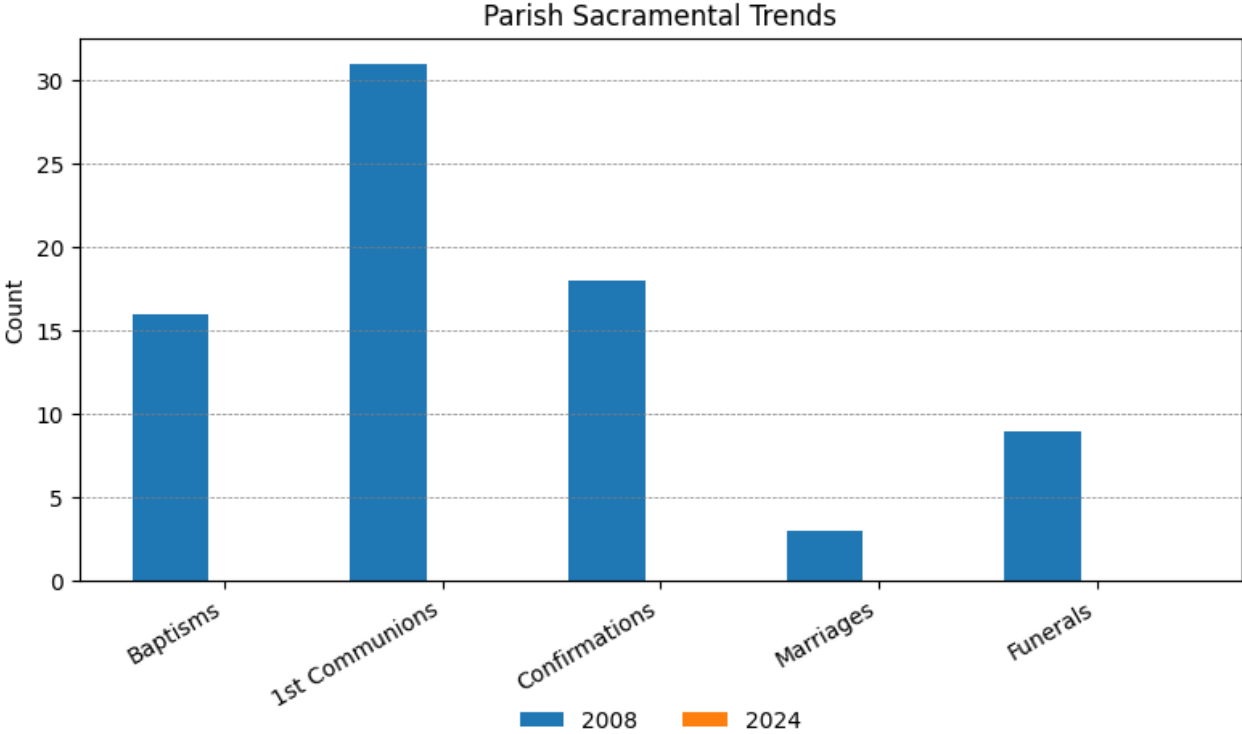
Mass Attendance per October Count



- Between 1998 and 2024, attendance decreased by 100%.
- From 2019 (Pre-COVID) to 2024, attendance decreased an additional 100%.
- Data for your parish is shown in the planning area section of the workbook.

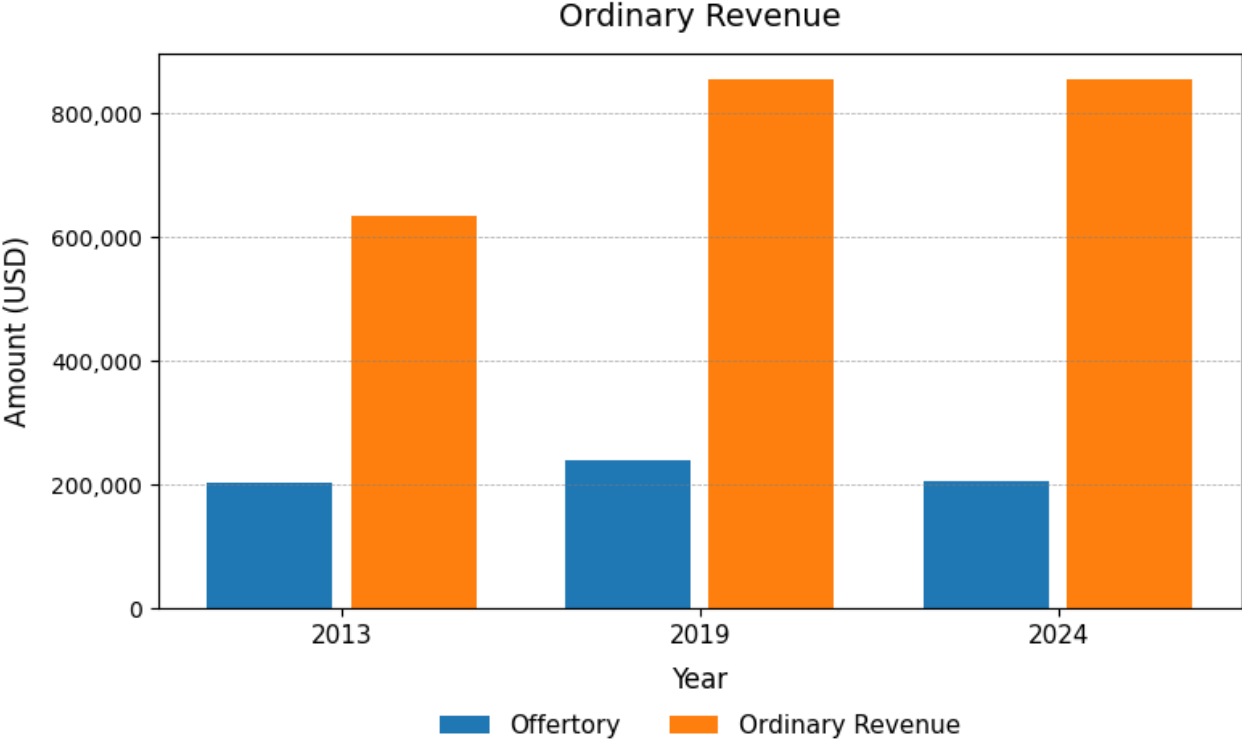
Please Note: Zeros represent that no data was reported in those years.

Parish Sacramental Trends



- Baptisms were 16 in 2008.
- 1st Communion were 31 in 2008.
- Confirmations were 18 in 2008, while marriages were 3 in 2008.
- Funerals were 9 in 2008.

Parish Sacramental Trends



- From 2013 to 2024, offertory collections increased by 1% while Ordinary Revenue rose by 35%.
- From 2019 to 2024, offertory declined moderately (14%), from \$238,630 to \$205,964.
- Ordinary Revenue, rose by 0% over the same period (from \$854,943 to \$854,774).

Financial Summary



St. Leo, Irvington

	2022	2023	2024
Total Ordinary Revenue	870,675	861,409	854,774
Additional Revenue	26,949	26,534	12,408
Non-Operating Revenue	239,096	254,114	249,739
Total Revenue	1,136,719	1,142,056	1,116,920
Total Expenses	947,928	1,026,920	1,043,178
Change in Net Assets	188,791	115,136	73,742
Net Capital Projects	(542,008)	(95,250)	0
Total Change in Net Assets	(353,217)	19,886	73,742

- St. Leo has experienced mixed financial results over the past 3 years, with gains increasing most recently.
- Ordinary Revenue has decreased, making up about 77% of total revenue annually.
- Total revenue decreased from \$1137K (2022) to \$1117K (2024).